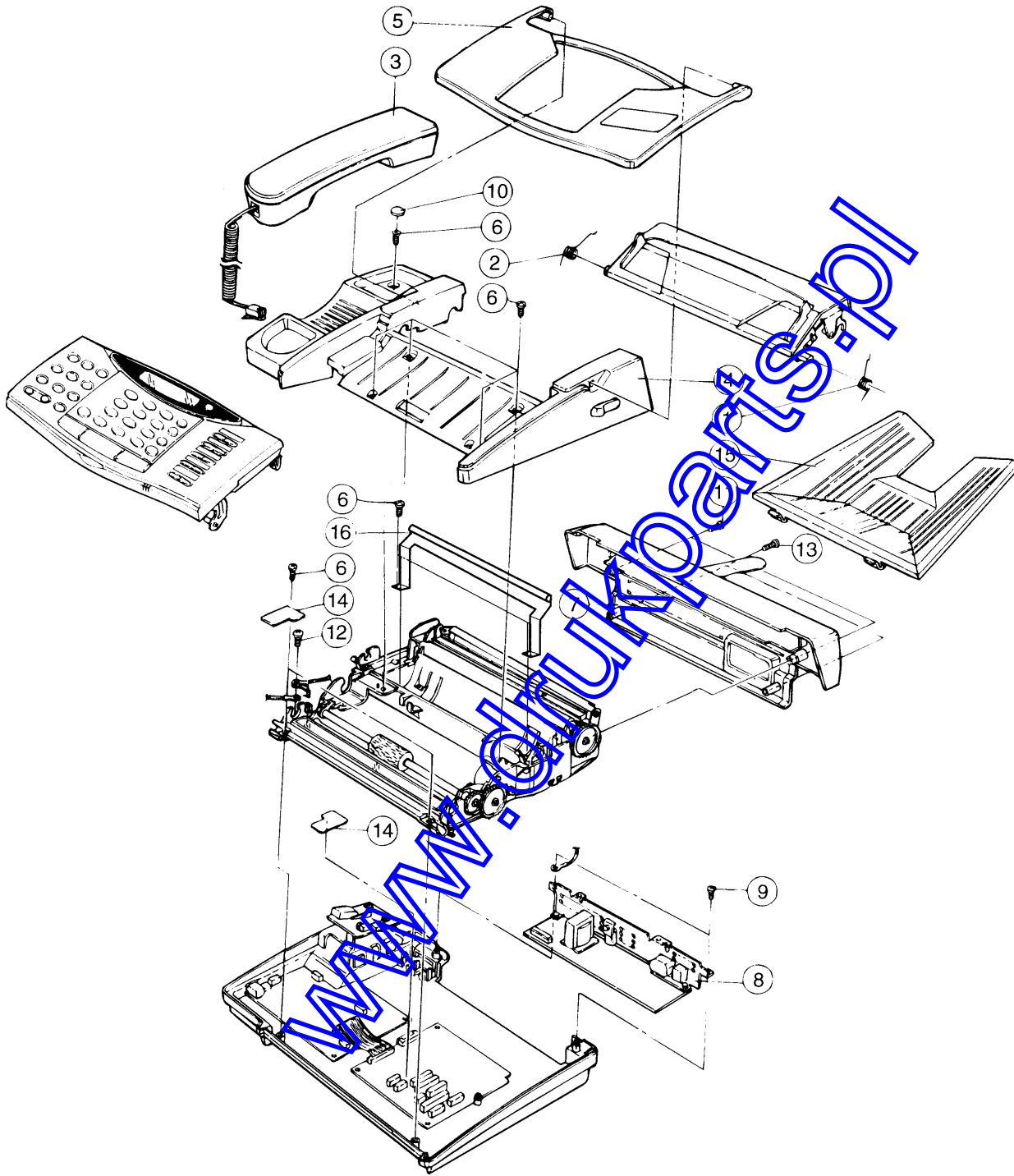


# 10. Exploded View & Parts List

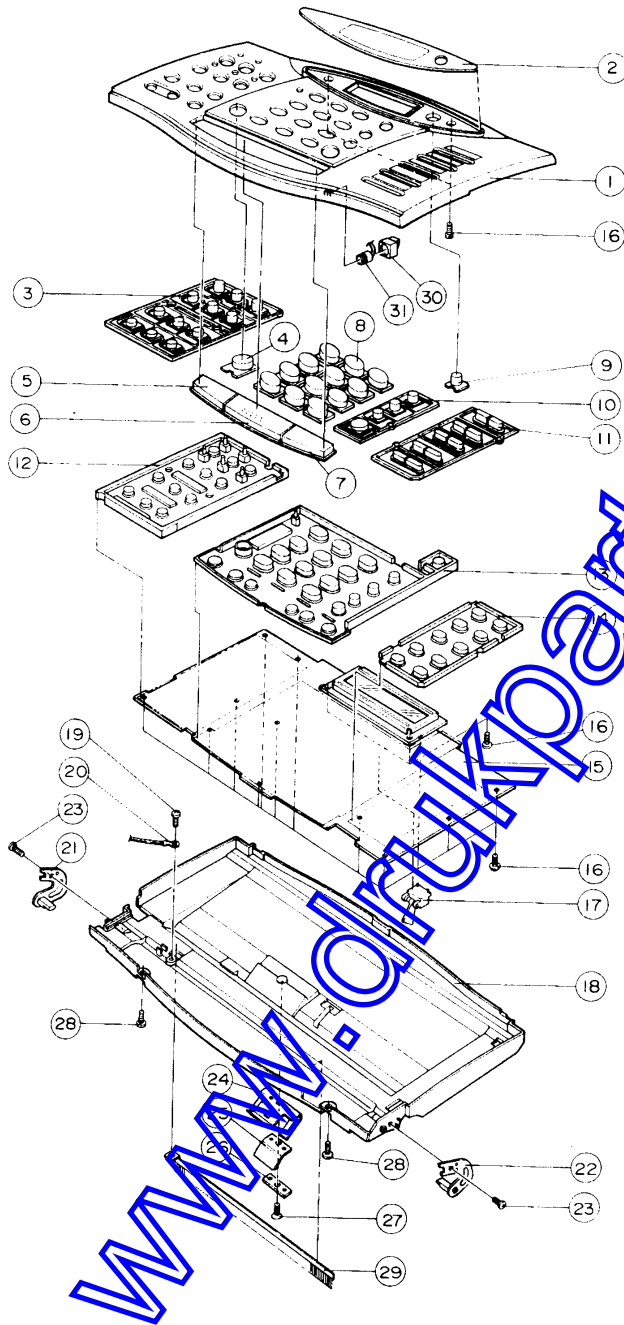
## 10-1. MAIN ASSEMBLY



MAIN ASSEMBLY

Location No.	Code No.	Description	Q'ty	Remarks
1	813 - 315054AA	SPRING-TORSION(R)	1	
2	813 - 315054AB	SPRING-TORSION(L)	1	
3	139 - 750520AAAF	ASS'Y-HANDSET	1	
4	139 - 500417AAAB	ASS'Y-COVER TOP	1	
5	821 - 311234AC	STACKER-TX	1	SF800
	821 - 311234BB	STACKER-TX	1	SF2800
6	847 - 501001AK	TAPTITE,B,PH,+,M3,L10	12	
7	821 - 311233AB	REAR COVER	1	SF800
	821 - 311250AB	REAR COVER	1	SF2800
8	953 - 140021RB	MEP,P/S,AC/DC	1	
9	847 - 501007DA	TAPTITE,B,BH,+,M3,L10	2	
10	821 - 258076BF	HOLE DUMMY	1	
11	847 - 501007DA	TAPTITE,B,PH,+,M3,L10	2	
12	847 - 501001AB	TAPTITE,B,PH,+,M3,L8	1	
13	847 - 501001AF	TAPTITE,B,PH,+,M3,L8	2	
14	821 - 317188AA	SHEET-DUMMY	2	
15	821 - 310958AA	STACKER-RX	1	Only SF2800
16	813 - 310353AA	BRACKET DECURL	1	Only SF2800

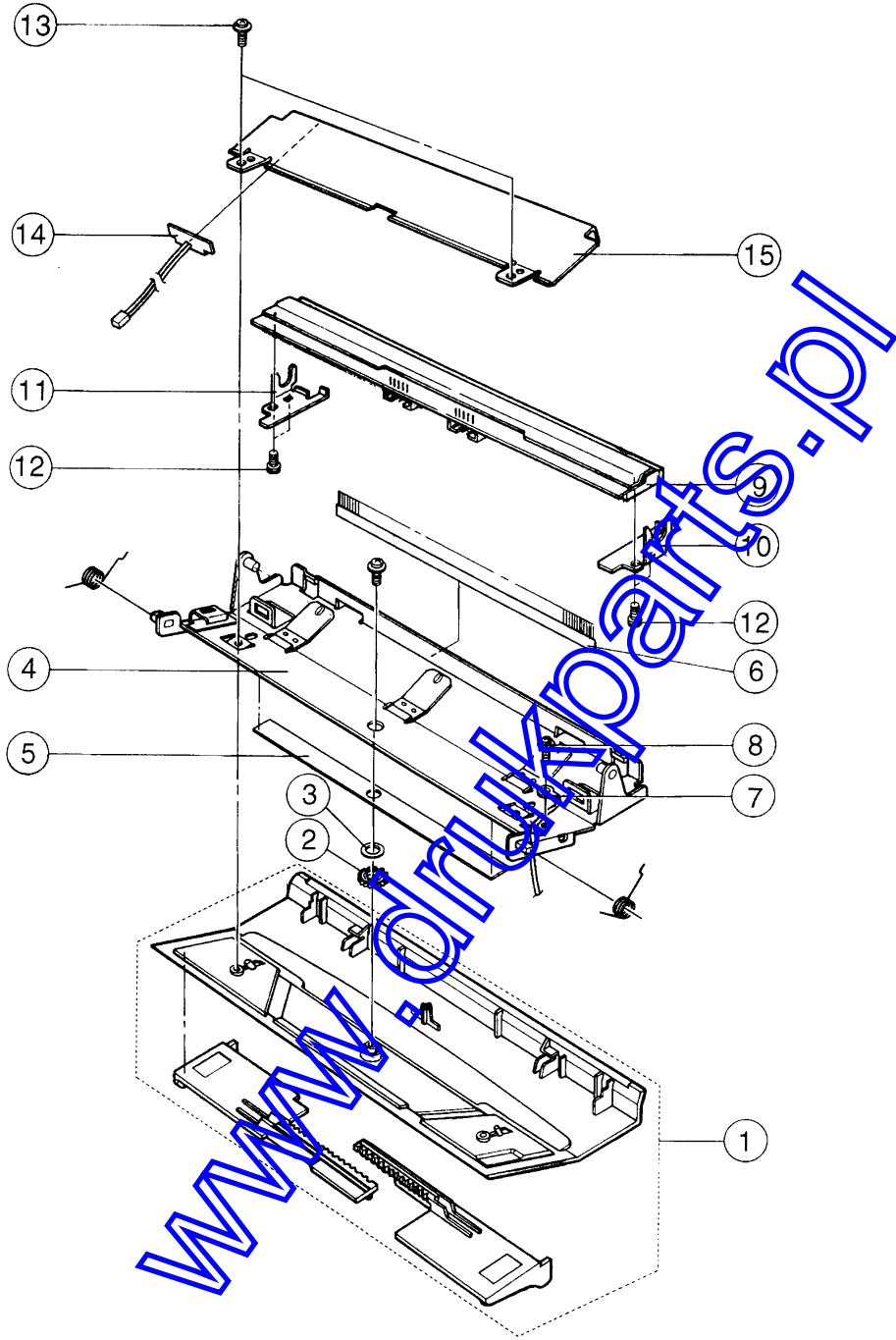
10-2. ASS'Y-OPE COVER



## ASS'Y-OPE COVER

Location No.	Code No.	Description	Q'ty	Remarks
1	821 - 311235FA	COVER-OPE	1	
2	811 - 311211CA	WINDOW-LCD	1	
3	821 - 311239AB	KEY-FUNCTION	1	
4	821 - 311238AA	KEY-ABSENT	1	
5	821 - 311243AA	KEY-STOP	1	
6	821 - 311244FA	KEY-START	1	
7	821 - 311237FA	KEY-SPEAKER	1	
8	821 - 311236AB	KEY-TEL	1	
9	821 - 311241AB	KEY-SEARCH	1	
10	821 - 311240AB	KEY-MODE	1	
11	821 - 311242AB	KEY-ONE TOUCH	1	
12	821 - 315214AA	RUBBER-CONTACT(A)	1	
13	821 - 315215AA	RUBBER-CONTACT(B)	1	
14	821 - 315216AA	RUBBER-CONTACT(C)	1	
15	650 - 317803AAAB	PBA OPE	1	
16	847 - 501005BA	TAPTITE,B,PH,+,M2.5,L6	16	
17	895 - 610013AA	INTERRUPTER,OS110703,304	1	
18	821 - 311229AA	FRAME-FRONT	1	
19	847 - 501005BA	TAPTITE,B,PH,+,M2.5,L6	1	
20	955 - 317825BECZ	CBF-WIRE,OPE-MAIN	1	
21	813 - 310212AB	HINGE-OPE(L)	1	
22	813 - 310212AA	HINGE-OPE(R)	1	
23	847 - 501001AF	TAPTITE,B,PH,+,M3,L8	2	
24	813 - 312089AA	SPRING-ADF	1	
25	821 - 315155AA	RUBBER-ADF	1	
26	813 - 310211AA	PLATE-ADF	1	
27	842 - 243013AB	TAPPING,FH,+,M3,L8	1	
28	847 - 501001AF	TAPTITE,B,PH,+,M3,L8	2	
29	811 - 311124AA	BRUSH-ANTI(TX)	1	
30	821 - 315217AA	ADAPTER-MIC	1	
31	939 - 030502DD	AUDIO-MIC,1.5V	1	

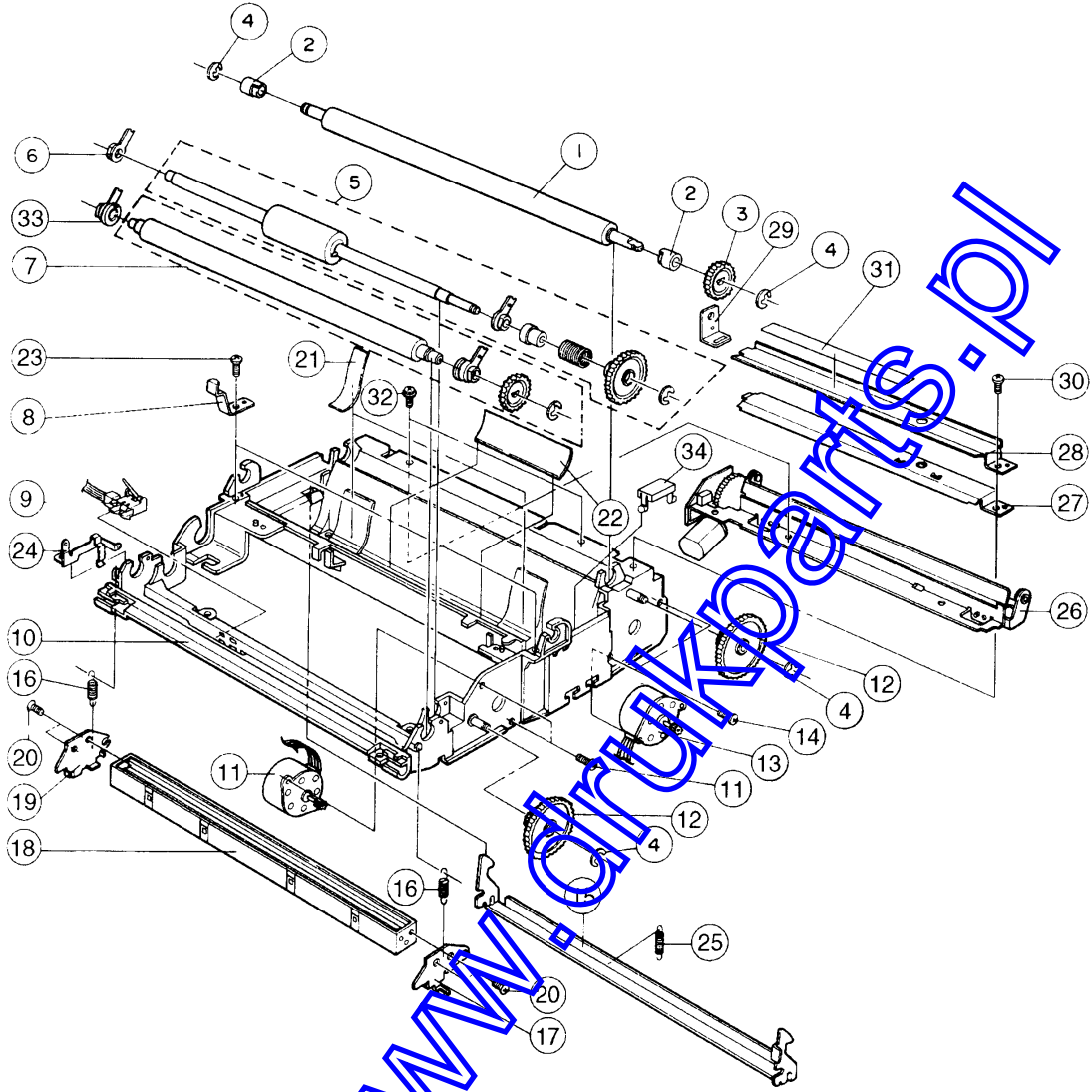
### 10-3. ASS'Y-RX COVER



## ASS'Y-RX COVER

Location No.	Code No.	Description	Q'ty	Remarks
1	811 - 311219AB	COVER-RX	1	
2	821 - 310254AA	PINION-GEAR	1	
3	813 - 310154AA	WASHER SPRING-CURVE	1	
4	811 - 311128AA	CHASSIS-RX	1	
5	829 - 311012CC	SHEET-RX	1	
6	811 - 311125AA	BRUSH-ANTI(RX)	1	
7	955 - 317814ACHZ	FRAME-RX EARTH WIRE	1	
8	847 - 502001AF	TAPTITE,F,B,PH,+,M3,L6	1	
9	897 - 500016AB	TPH	1	
10	813 - 310219AB	GUIDE TPH(L)	1	
11	813 - 310219AA	GUIDE TPH(R)	1	
12	841 - 810001AA	MACHINE,A,PH,+,M3,L6	4	
13	847 - 502001AF	TAPTITE,F,B,PH,+,M3,L6	3	
14	650 - 317805AAAA	PBA,PAPER EMPTY	1	
15	813 - 312093AA	GUIDE PAPER	1	SF800
	811 - 311218AA	GUIDE PAPER	1	SF2800

# 10-4. ASS'Y-MAIN FRAME

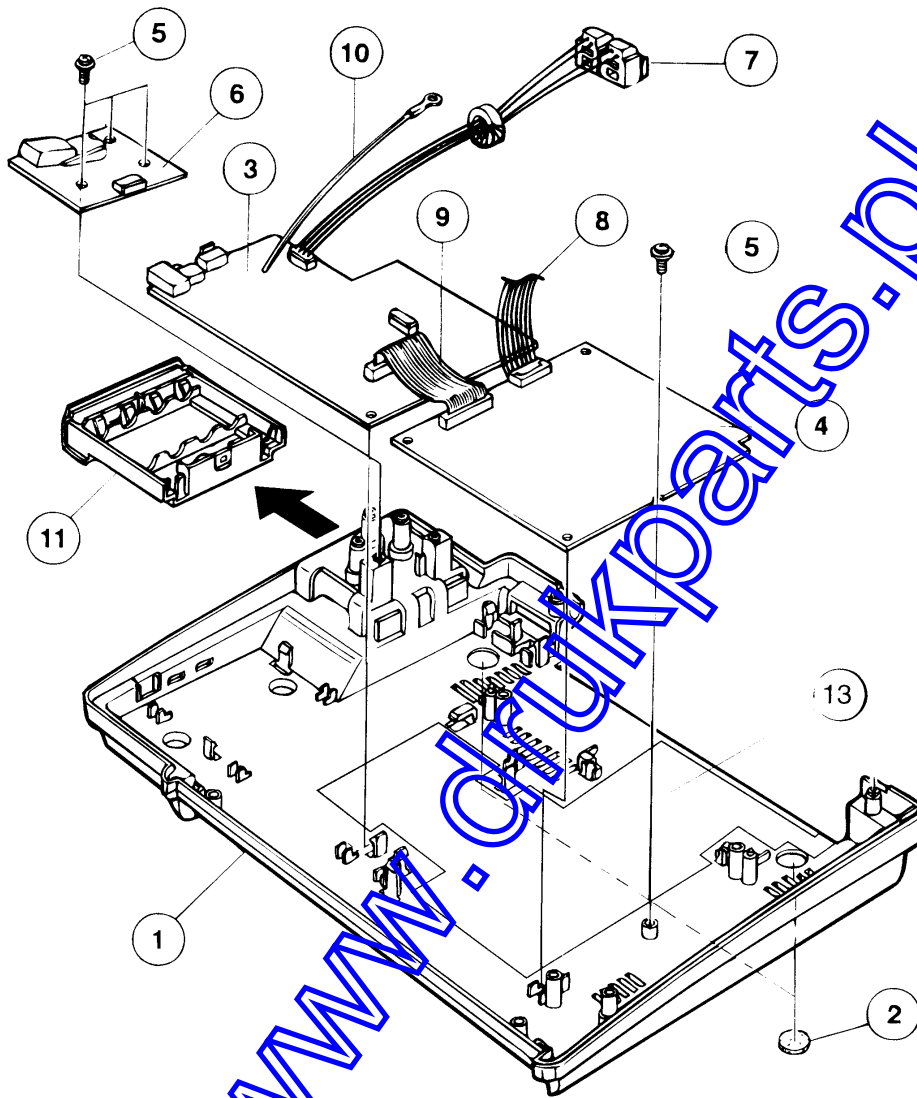


## ASS'Y-MAIN FRAME

Location No.	Code No.	Description	Q'ty	Remarks
1	811 - 311122AA	ROLLER PLATEN	1	
2	815 - 312015AA	BUSHING PLATEN	2	
3	821 - 310783AA	GEAR CIS	2	
4	857 - 150010AL	MISCEL,RING E,#3	6	
5	139 - 750507AAAA	ASS'Y-ROLLER ADF	1	
6	821 - 310785AA	BUSHING SHAFT	1	
7	139 - 750505SAAA	ASS'Y-ROLLER CIS	1	
8	813 - 310352AA	LOCKER TX	2	
9	895 - 610012AA	INTERRUPTER OS570203-605	1	
10	821 - 310686AA	MAIN FRAME	1	
11	953 - 280023HB	MOTOR STEP,-,7P	1	
12	821 - 310781AA	GEAR IDLE	2	
13	953 - 280023HA	MOTOR STEP,-,6P	1	
14	841 - 313008BB	MACHINE,PH,+,M3,L6	4	
15	813 - 310216AA	LOCKER RX	1	
16	831 - 521101AA	SPRING CIS(500g)	2	
17	813 - 310350AA	BRACKET CIS(R)	1	
18	895 - 390014AA	CIS	1	
19	813 - 310350AB	BRACKET CIS(L)	1	
20	842 - 840028AA	TAPPING,PH,+,M2,L6	4	
21	961 - 160043AJ	SLIDING TAPE	2	
22	825 - 131002CP	PAPER L/D LABEL	1	SF800
	825 - 131006KE	PAPER L/D LABEL	1	SF2800
23	847 - 501001AF	TAPTITE,B,PH,+,M3,L6	2	
24	813 - 312159AA	SPRING GROUND TX	1	
25	813 - 315053AA	SPRING CIS(350g)	1	
26	811 - 311220AA	AUTO CUTTER	1	Only SF2800
27	813 - 310296AA	GUIDE PAPER(B)	1	Only SF2800
28	813 - 310295AA	GUIDE PAPER(A)	1	Only SF2800
29	813 - 310299AA	BRACKET-GUIDE PAPER	1	Only SF2800
30	847 - 501001AA	SCREW,TAPTITE,F,B,PH,+,M3,L6	2	Only SF2800
31	825 - 119007LF	PAPER GUIDE LABEL	1	Only SF2800
32	841 - 810001AA	MACHINE,A,PH,+,M3,L6	3	Only SF2800
33	821 - 311268AA	BUSHING SHAFT	1	
34	821 - 310795AA	SPACER	1	



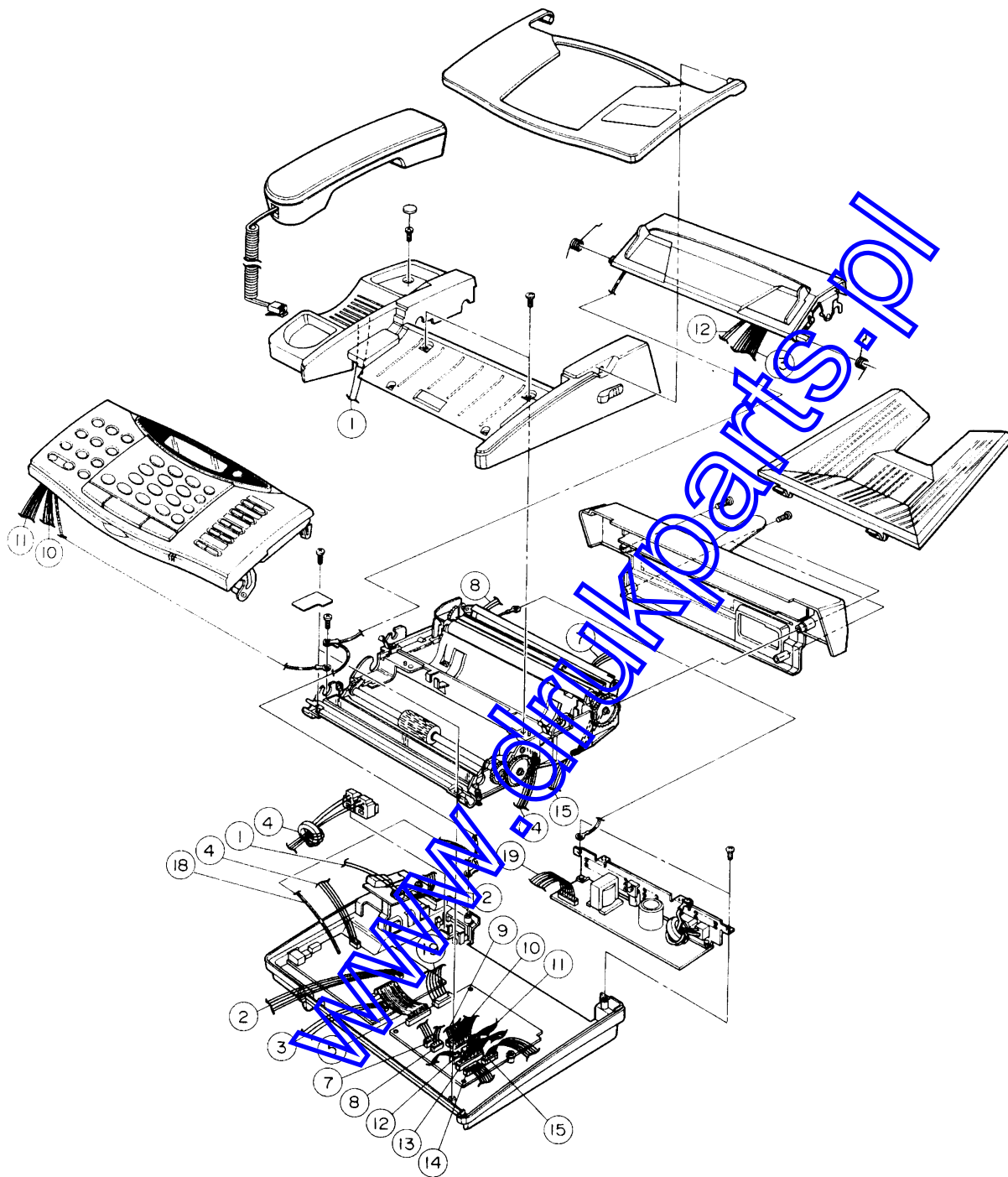
10-5. ASS'Y-BASE



## ASS'Y-BASE

Location No.	Code No.	Description	Q'ty	Remarks
1	821 - 311231AB	BASE	1	
2	821 - 272003AB	RUBBER-FOOT	2	
3	650 - 317802ADAA	LIU-BOARD	1	
4	650 - 317801AAAC	MAIN-BOARD	1	SF800
	650 - 317801AABC	MAIN-BOARD	1	SF2800
5	847 - 502001AF	TAPTITE,F,B,PH,+,M3,L6	3	
6	650 - 317804ABAA	PBA,HOOK S/W	1	
7	955 - 317632ABJZ	TEL LINE	1	
8	955 - 317632ABJZ	MAIN POWER HARNESS	1	
9	955 - 317830AAKZ	CABLE-FLAT,30P,90mm	1	
10	955 - 317608ABKZ	LIU-PWR,EARTH,190mm	1	
11	811 - 311216AB	BATTERY CASE	1	
12	842 - 243013AB	TAPPING,FH,+,M3,L8	1	
13	811 - 311217AA	EMI SHIEL-D	1	

# 10-6. ASS'Y-CABLE AND HARNESS



## ASS'Y-CABLE AND HARNESS

Location No.	Code No.	Description	Q'ty	Remarks
1	955 - 317809ACCZ	SPK-HOOK	1	
2	955 - 317803ABJZ	LIU-HOOK	1	
3	895 - 610012AA	SCAN SENSOR	1	
4	955 - 317808ABGZ	CBF-LIU LINE 6P	1	
5	955 - 317830AAKZ	CABLE-FLAT, 30P	1	
7	955 - 317810ADHZ	AUTO CUTTER JAM SENSOR	1	Only SF2800
8	811 - 311220AA	AUTO CUTTER HARNESS	1	Only SF2800
9	955 - 317813ACBZ	MAIN-CIS	1	
10	955 - 317825BECZ	OPE-MAIN	1	
11	955 - 317825BECZ	OPE-MAIN	1	
12	955 - 317804ABFZ	PEMPTY SENSOR	1	
13	955 - 317806ACKZ	MAIN-TPH	1	
14	953 - 280023HB	MOTOR-STEP(TX)	1	
15	953 - 280023HA	MOTOR-STEP(RX)	1	
16	955 - 317812AAJZ	CUTTER POWER EARTH	1	Only SF2800
17	955 - 317814ACHZ	TPH-CIS-POWER GROUND	1	
18	955 - 317608ABKZ	LIU-PWR EARTH WIRE	1	
19	955 - 317805ABJZ	POWER HARNESS	1	