

**Chapter 5 Parts List(34PPM) CONTENTS**

1. Parts List..... 5 - 1

1.1 Caution for use of parts list ..... 5 - 1

PL1.1 Cover [Illustration]..... 5 - 2

PL1.1 Cover [List] ..... 5 - 3

PL2.1 150 Paper Cassette [Illustration] ..... 5 - 4

PL2.1 150 Paper Cassette [List] ..... 5 - 5

PL4.1 550 Paper Cassette [Illustration] ..... 5 - 6

PL4.1 550 Paper Cassette [List] ..... 5 - 7

PL5.1 150 Paper Feeder [Illustration] ..... 5 - 8

PL5.1 150 Paper Feeder [List] ..... 5 - 9

PL7.1 550 Paper Feeder [Illustration] ..... 5 - 10

PL7.1 550 Paper Feeder [List] ..... 5 - 11

PL8.1 Xero [Illustration]..... 5 - 12

PL8.1 Xero [List] ..... 5 - 13

PL10.1 500 Paper Exit (1/2) [Illustration] ..... 5 - 14

PL10.1 500 Paper Exit (1/2) [List] ..... 5 - 15

PL10.2 500 Paper Exit (2/2) & Option Face Up Tray [Illustration] ..... 5 - 16

PL10.2 500 Paper Exit (2/2) & Option Face Up Tray [List] ..... 5 - 17

PL11.1 Frame & Drive [Illustration] ..... 5 - 18

PL11.1 Frame & Drive [List] ..... 5 - 19

PL12.1 Electrical [Illustration]..... 5 - 20

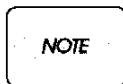
PL12.1 Electrical [List] ..... 5 - 21

[www.drukparts.nl](http://www.drukparts.nl)

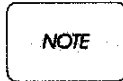
## 1. Parts List

### 1.1 Caution for use of parts list

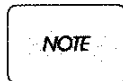
- ◆ The figures indicating the illustrations are the item No. in the list and present correspondence between the illustrations and parts.
- ◆ The notation of PL "X.Y.Z" is composed of the plate (PL), item "X.Y", and parts "Z".
- ◆ The alphabet characters in the illustrations represent screws and clips as follows:  
"S": screw, "E": E-ring, "KL": KL clip, "C": C-ring, and "N": nut
- ◆ "t" mark in the illustrations are attached to items indicating assembly parts in the illustrations.
- ◆ Encircled alphabetical figures in the illustrations indicate interrupted leader lines. Same characters in the illustrations represent lines to be connected.
- ◆ The mark "(with 2-5)" attached to assembly parts on the illustrations and lists represents that the items "2, 3, 4, and 5" of that plate are contained and the mark "(with 2-5, PL 6.1.1)" represent that the item "2, 3, 4, and 5" of that plate and the item "1" of the plate "6.1" are contained.
- ◆ The mark "[Same PLX.Y.Z]" attached to parts in the illustrations and lists represents that the parts is the same as the parts of the item "Z" of the plate "X.Y".
- ◆ The mark "H" attached to the item in the list represents "recommended spare parts" which can be usually supplied. (Supply of other parts shall be examined separately.)
- ◆ The mark "[ ]" attached to parts in the list represents "Note" or "Reference" about that parts is contained in the same page.
- ◆ "HIGH ASSY" in the list represent the high level assembly parts containing that parts.



For spare parts, refer to the Spare parts list which is issued separately.

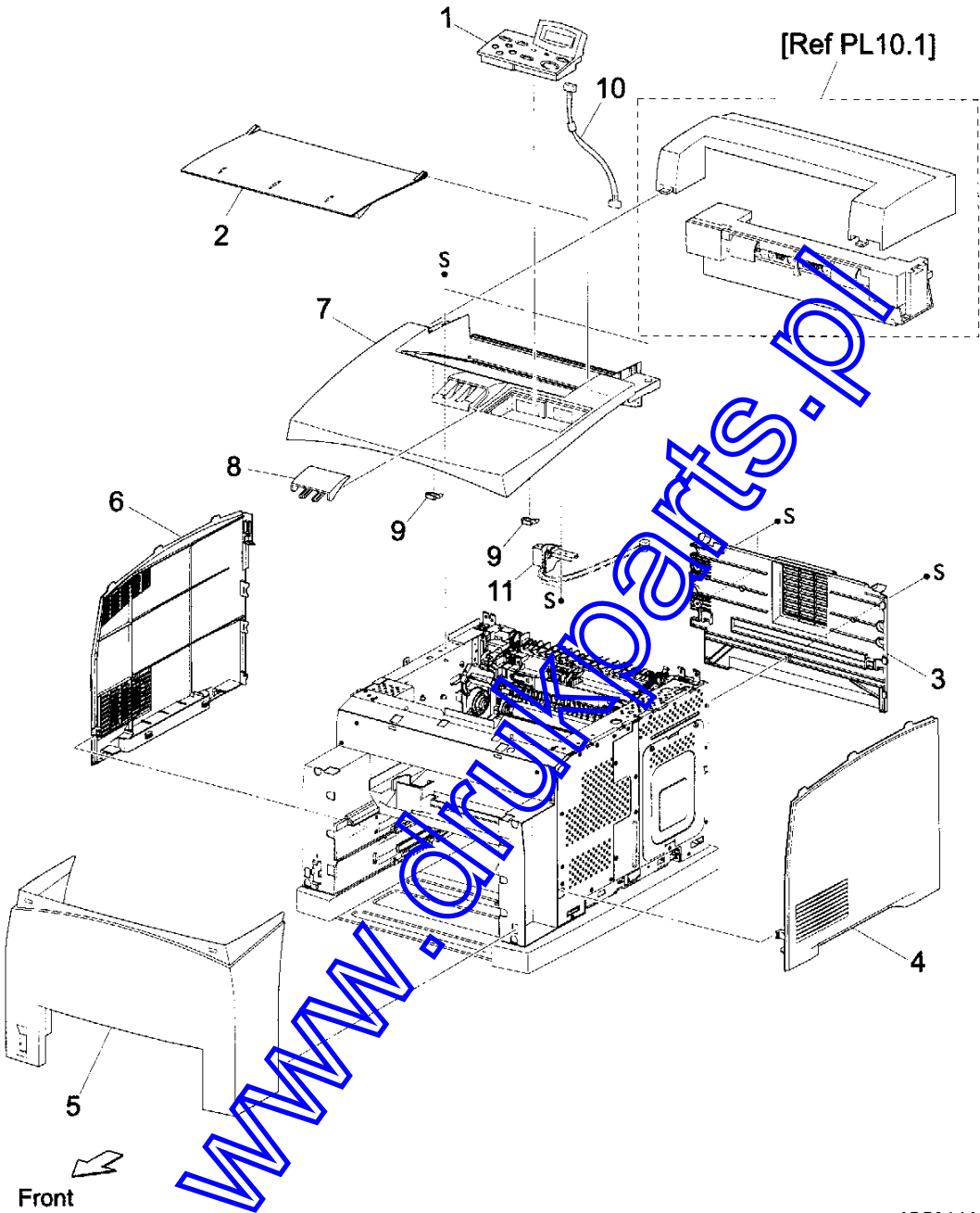


For the connector (P/J), parts such as harness, wire, etc. in the list, refer to Chapter 6, Electric wiring



It should be noted that configuration of parts may be different or some parts are not used depending on specifications of OEM.

PL1.1 Cover [Illustration]



JG5014AA

PL1.1 Cover [List]

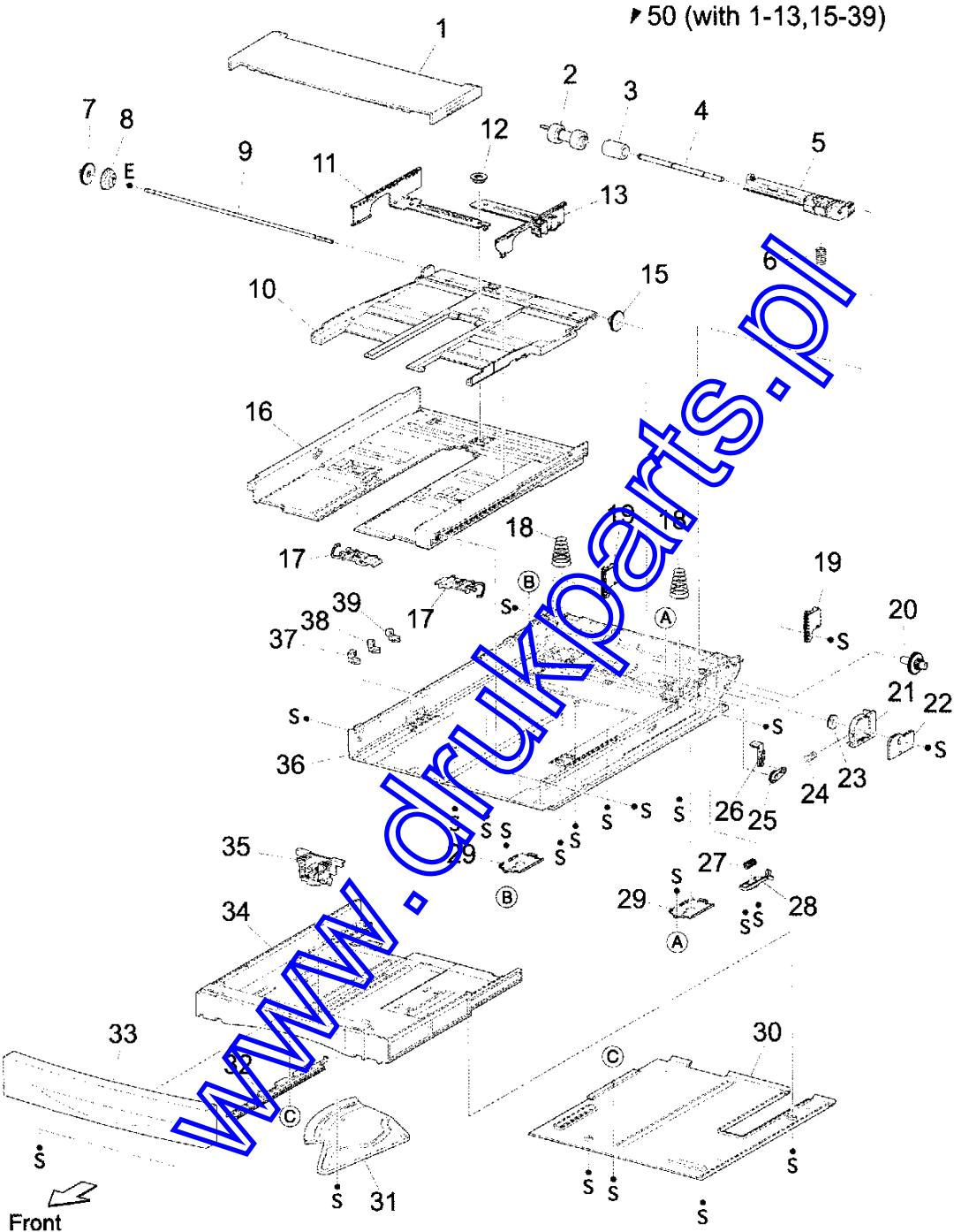
Item	Parts name
1	OPERATION PANEL (P1)
2	COVER OPEN
3	COVER REAR
4	COVER RIGHT
5	COVER FRONT
6	COVER LEFT
7	COVER TOP
8	COVER STOPPER
9	STOPPER OPEN
10	HARNESS ASSY PANEL
11	SWITCH I/L ASSY (J144,J411)
12	--

[www.drukparts.pl](http://www.drukparts.pl)

IPL Callout	Original P/N	Name	OEM Note	Voltage	Subsystem	Usage	Category
	100S63205X	JIGEN ODA 34 1200DPI 220V NETWORK		220			IOT
	100S63204X	JIGEN ODA 34 1200DPI 120V NETWORK		110			IOT
	084K1354X	PKG OPTION OCT OKI			OPT FDR		OPT
	084K1352X	PKG OPTION DUP-H OKI			DUPLEX		OPT
	084K1350X	PKG OPTION FDR 550 OKI			OPT FDR		OPT
	084K1698X	CRU ASSY ODA 17K			XEROGRAPHICS		CRU
	675K0527X	NETWORK DIMM					OPT
	675K0666X	PKG HDD BRKT KIT					OPT
	675K0731X	PKG HDD					OPT
01.01.01	802K5568X	OPERATION PANEL ODC			COVERS	0.060	SPR
01.01.02	802E6086X	COVER OPEN ODC			COVERS	0.020	SPR
01.01.03A	802E6090X	COVER REAR 34PPM ODC			COVERS	0.010	SPR
01.01.03B	802E6091X	COVER REAR 34PPM ODC			COVERS	0.010	SPR
01.01.04	802E6089X	COVER RIGHT ODC			COVERS	0.010	SPR
01.01.05	802E6084X	COVER FRONT ODC			COVERS	0.010	SPR
01.01.06	802E6088X	COVER LEFT ODC			COVERS	0.010	SPR
01.01.07	802E6085X	COVER TOP ODC			COVERS	0.010	SPR
01.01.08	802E6087X	COVER STOPPER ODC			COVERS	0.020	SPR
01.01.09	048E4616X	STOPPER OPEN			COVERS	0.001	SPR
01.01.10	962K1406X	HARNES ASSY PANEL			ELECTRICAL	0.001	SPR
01.01.11	110K1189X	SWITCH I/L ASSY			ELECTRICAL	0.005	SPR
01.01.99	604K1539X	KIT TOP COVER ODC			COVERS	0.010	SPR

[www.drukparts.pl](http://www.drukparts.pl)

PL2.1 150 Paper Cassette [Illustration]



JG5002AA

## PL2.1 150 Paper Cassette [List]

Item	Parts name
1	COVER CST
2	ROLL ASSY RETARD *1
3	FRICTION CLUTCH
4	SHAFT RETARD
5	HOLDER RETARD
6	SPRING RETARD
7	GEAR PB L
8	GEAR BTM DMP ONEWAY
9	SHAFT PB
10	PLATE ASSY BTM
11	GUIDE ASSY SD L150
12	GEAR PINION
13	GUIDE ASSY SD R150
14	--
15	GEAR BTM LOCK ONEWAY
16	HOUSING TOP 150
17	LOCK EXTENSION
18	SPRING BTM UP 150
19	PLATE GEAR LOCK 150
20	GEAR PB R
21	RACK BTM LOCK 150
22	COVER BTM UP
23	GEAR BTM LOCK PINION
24	SPRING BTM LOCK
25	GEAR LEVER LOCK
26	LEVER BTM LOCK
27	SPRING STOPPER GEAR
28	STOPPER GEAR
29	PLATE SUPPORT BASE
30	COVER EXTENSION
31	GEAR SECTOR
32	RACK SIZE
33	HANDLE EXTENSION 150
34	HOUSING EXTENSION 150
35	GUIDE ASSY END 150
36	HOUSING BASE 150
37	LINK SW SIZE1-150
38	LINK SW SIZE2-150
39	LINK SW SIZE3-150
40	--
41	--
42	--
50	150 PAPER CASSETTE (with 1-13,15-39)
51	--

\*1: Periodical Replacement parts (per 200k print)  
3 sets [1] of PL2.1.2, PL5.1.11, 44

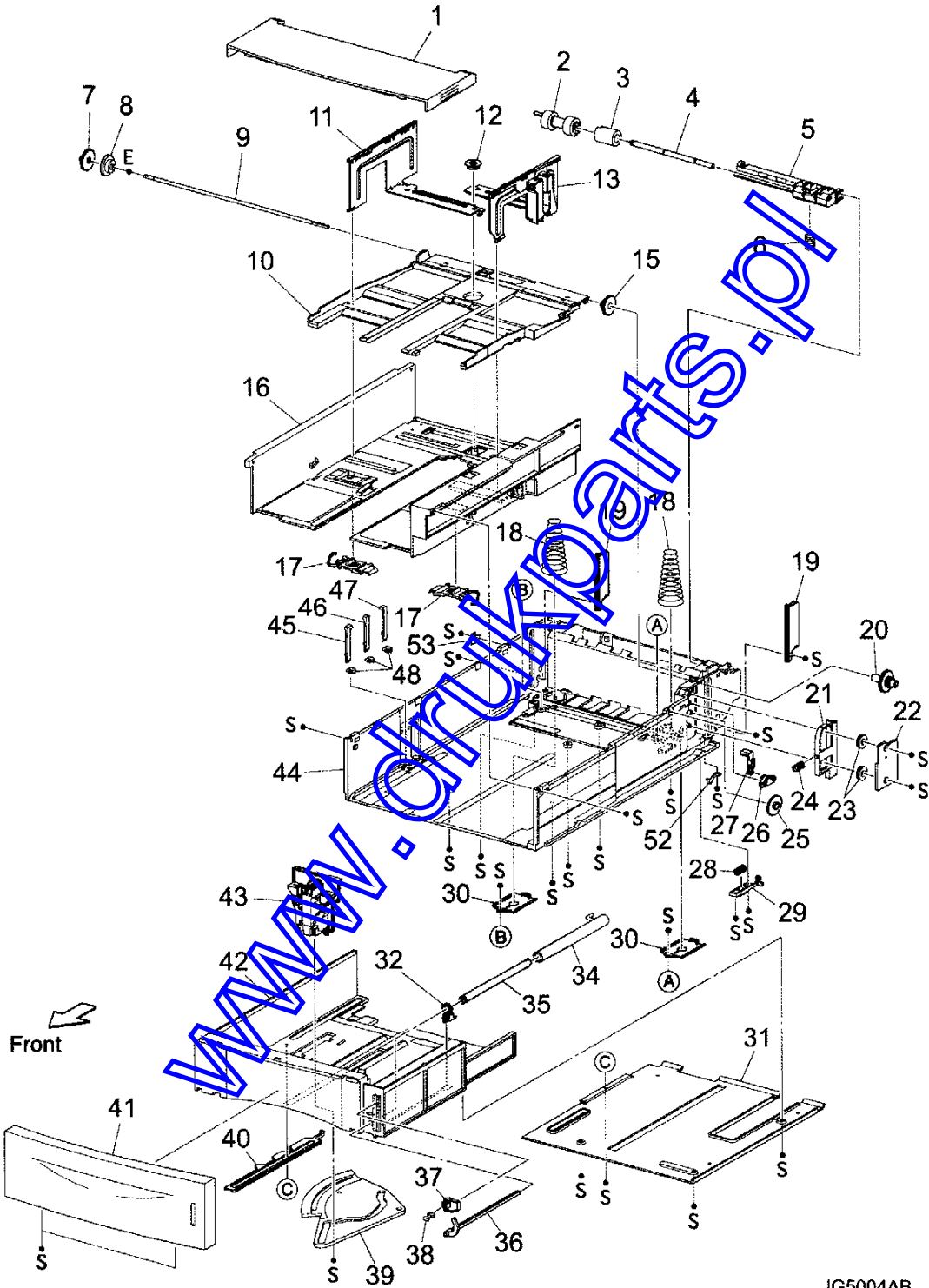
02.01.01	802E4719X	COVER CST	3.1.1, 4.1.1, 20.3.1		CST	0.020	SPR
02.01.02	604K1119X	KIT ROLL ASSY RETARD	3.1.2, 4.1.2, 5.1.11, 5.1.44, 7		CST	5.000	SPR
02.01.33	802E6045X	HANDLE EXTENSION 150 ODC			CST	0.020	SPR
02.01.35	038K8708X	GUIDE END 150			CST	0.002	SPR
02.01.50	084K1537X	150 PAPER CASSETTE ODC			CST	0.06	SPR
03.01.35	038K8709X	GUIDE END 250			CST	0.002	SPR
03.01.50	084K1539X	250 PAPER CASSETTE ODC			CST	0.06	SPR

[www.drukparts.pl](http://www.drukparts.pl)



PL4.1 550 Paper Cassette [Illustration]

▼ 50 (with 1-13,15-32,34-48,52,53)



JG5004AB

## PL4.1 550 Paper Cassette [List]

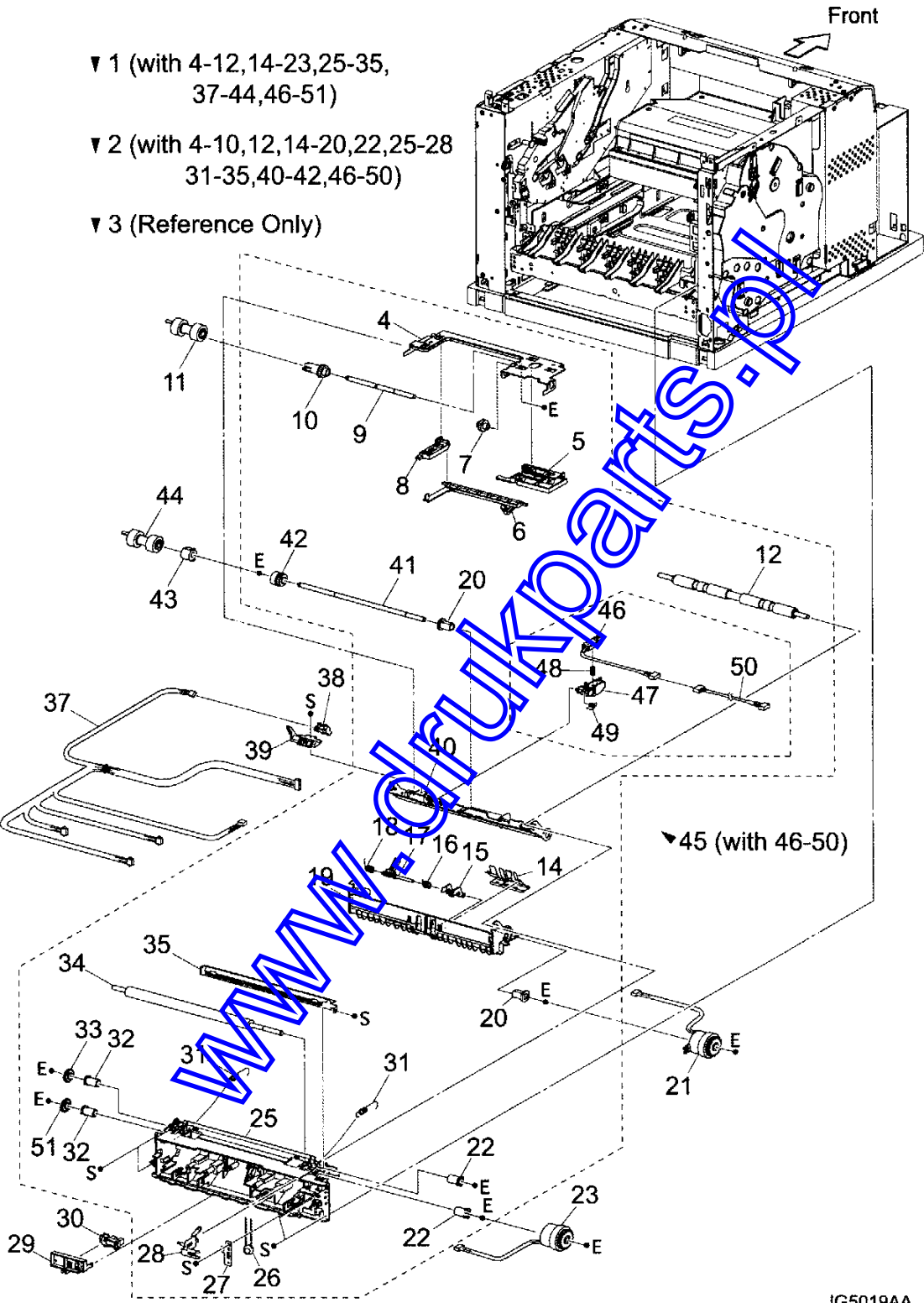
Item	Parts name
1	COVER CST
2	ROLL ASSY RETARD *1
3	FRICTION CLUTCH
4	SHAFT RETARD
5	HOLDER RETARD
6	SPRING RETARD
7	GEAR PB L
8	GEAR BTM DMP ONEWAY
9	SHAFT PB
10	PLATE ASSY BTM
11	GUIDE ASSY SD L550
12	GEAR PINION
13	GUIDE ASSY SD R550
14	--
15	GEAR BTM LOCK ONEWAY
16	HOUSING TOP 550
17	LOCK EXTENSION
18	SPRING BTM UP 550
19	PLATE GEAR LOCK 550
20	GEAR PB R
21	RACK BTM LOCK 550
22	COVER BTM UP 550
23	GEAR BTM LOCK PINION
24	SPRING BTM LOCK
25	GEAR BTM LOCK
26	GEAR LEVER LOCK
27	LEVER BTM LOCK
28	SPRING STOPPER GEAR
29	STOPPER GEAR
30	PLATE SUPPORT
31	COVER EXTENSION
32	SUPPORT GUIDE IND
33	--
34	GUIDE INDICATOR 1
35	GUIDE INDICATOR 2
36	GUIDE INDICATOR 3
37	LOW INDICATOR
38	LOW IND FRONT
39	GEAR SECTOR
40	RACK SIZE
41	HANDLE EXTENSION 550
42	HOUSING EXTENSION 550
43	GUIDE ASSY END 550
44	HOUSING BASE 550
45	LINK SW SIZE1-550
46	LINK SW SIZE2-550
47	LINK SW SIZE3-550
48	LINK SW SIZE LOW
49	--
50	550 PAPER CASSETTE (with 1-13,15-32,34-48,52,53)
51	--
52	STOPPER BASE R
53	STOPPER BASE L

\*1: Periodical Replacement parts (per 200k print)  
3sets [1] of PL4.1.2, PL7.1.19, 29

04.01.43	038K8658X	GUIDE END 550	20.3.43		CST	0.002	SPR
04.01.50	084K1543X	550 PAPER CASSETTE ODC	20.3.50		CST	0.060	SPR

[www.drukparts.pl](http://www.drukparts.pl)

PL5.1 150 Paper Feeder [Illustration]



JG5019AA

## PL5.1 150 Paper Feeder [List]

Item	Parts name
1	150 FEEDER ASSY (with 4-12,14-23,25-35,37-44,46-51)
2	FDR1 AS SUB 150 A4 (with 4-10,12,14-20,22,25-28,31-35,40-42,46-50)
3	CHUTE ASSY FDR1 (Reference Only) (with 4-10,14-20,40-42)
4	SUPPORT NUDGER
5	HOLDER LEFT
6	ACTUATOR NO PAPER
7	GEAR IDLER NUDGER
8	HOLDER RIGHT
9	SHAFT NUDGER
10	GEAR NUDGER
11	ROLL ASSY NUDGER *1
12	ROLL REGI RUBBER
13	--
14	COVER ACTUATOR-A4
15	ACTUATOR A
16	SPRING REGI SNR B
17	ACTUATOR B
18	SPRING REGI SNR A
19	CHUTE BTM ASSY
20	BEARING NUDGER
21	CLUTCH ASSY PH (J242)
22	BEARING REGI LEFT
23	CLUTCH REGI (J243)
24	--
25	CHUTE REGI
26	VARISTER
27	EARTH PLATE BASE
28	EARTH PLATE MID
29	COVER SENSOR
30	SENSOR REGI (J241)
31	SPRING REGI
32	BEARING REGI RIGHT
33	GEAR REGI RUBBER BLUCL
34	ROLL REGI METAL
35	CHUTE EARTH REGI
36	--
37	HARNES ASSY TRAY1 (J245-J240,J241,J242,J243,J244)
38	SENSOR NO PAPER (P240)
39	HOLDER NO PAPER SENSOR
40	CHUTE TOP ASSY
41	SHAFT FEED
42	CLUTCH ONEWAY NUDGER
43	CLUTCH ONEWAY FEED
44	ROLL ASSY FEED *1
45	SENSOR ASSY TONER (with 46-50)
46	SENSOR TONER (J220)
47	HOLDER-D
48	SPRING TONER
49	SPRING TONER BOX
50	HARNES ASSY TONER 1 (J220-P221)
51	GEAR REGI METAL WHITE

\*1: Periodical Replacement parts (per 200k print)  
3sets [1] of PL5.1.11, 44, PL2.1.2

05.01.01	022K6608X	150 FEEDER ASSY			FEEDER	0.060	SPR
05.01.06	120E2162X	ACTUATOR NO PAPER	6.1.15, 7.1.14, 20.2.6		FEEDER		SPR
05.01.07	007E7488X	GEAR IDLER NUDGER	6.1.16, 7.1.15, 20.2.7		FEEDER	0.001	SPR
05.01.10	059K2527X	GEAR NUDGER	6.1.19, 07.1.18, 20.2.10		FEEDER	0.001	SPR
05.01.12	059E9783X	ROLL REGI RUBBER			FEEDER	0.020	SPR
05.01.15	120E2129X	ACTUATOR A			FEEDER	0.020	SPR
05.01.16	809E3749X	SPRING REGI SNR B			FEEDER	0.001	SPR
05.01.17	120E2130X	ACTUATOR B			FEEDER	0.02	SPR
05.01.18	809E3748X	SPRING REGI SNR A			FEEDER	0.001	SPR
05.01.21	121K2851X	CLUTCH ASSY RH	20.2.21, 20.2.22		FEEDER	0.010	SPR
05.01.21	121K3060X	CLUTCH ASSY LH ALTERNATE	20.2.21, 20.2.22		FEEDER	0.010	SPR
05.01.30	130E8197X	SENSOR REG	10.1.25, 10.1.26, 20.2.33,		FEEDER	0.005	SPR
05.01.31	809E4109X	SPRING REG			FEEDER	0.001	SPR
05.01.33	807E0129X	GEAR REGI RUBBER (BLACK)			FEEDER	0.001	SPR
05.01.41	006E7780X	SHAFT FEED	6.1.27, 7.1.26, 20.2.16		FEEDER	0.001	SPR
05.01.42	005E1695X	CLUTCH ONE WAY NUDGER	6.1.28, 7.1.27, 20.2.15		FEEDER	0.010	SPR
05.01.43	005E1694X	CLUTCH ONE WAY FEED	6.1.29, 7.1.28, 20.2.13		FEEDER	0.010	SPR
05.01.45	130K6360X	SENSOR TONER ASSEMBLY			FEEDER	0.005	SPR
06.01.03	032E1879X	GUIDE TRAY RIGHT	7.1.3 for 550 feeder		FEEDER	0.002	SPR
06.01.05	120E2131X	ACTUATOR	7.1.5, 20.1.31 for 550 feeder		FEEDER	0.020	SPR
06.01.07	032K9683X	GUIDE TRAY LEFT	7.1.7 for 550 feeder		FEEDER	0.002	SPR
06.01.09	003E5923X	LOCK CST L	7.1.9, 20.1.39 for 550 feeder		OPT FDR		SPR
06.01.11	022K6696X	250-550 FEEDER ASSY	07-01-10 for 550 feeder		FEEDER	0.060	SPR

www.drukparts.pl



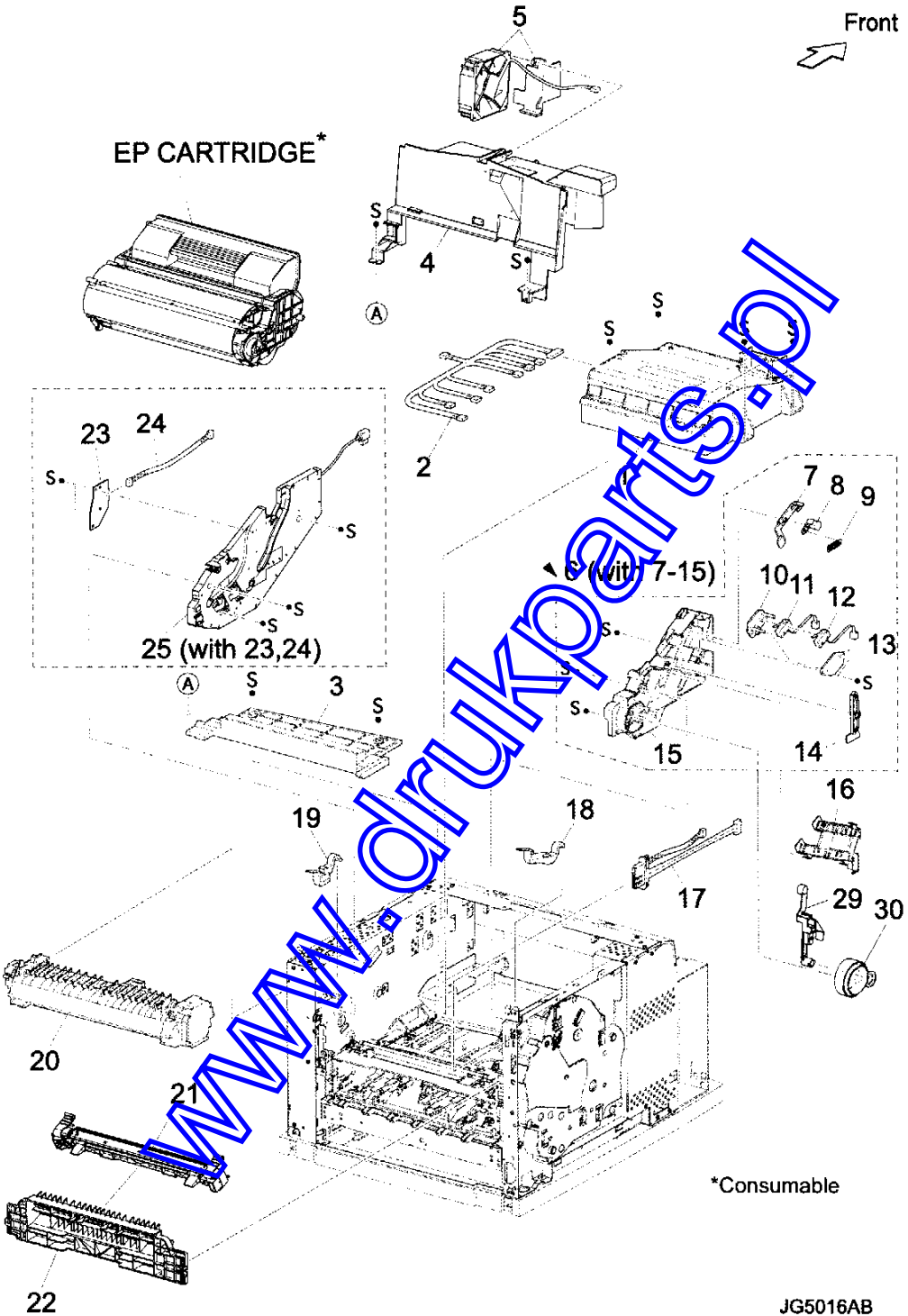
## PL7.1 550 Paper Feeder [List]

Item	Parts name
1	--
2	HARNESS ASSY LOW1 (J26-P260)
3	GUIDE TRAY RIGHT
4	SENSOR LOW PAPER (J260)
5	ACTUATOR LOW PAPER
6	PLATE CST LOCK
7	GUIDE TRAY LEFT (with 8,9)
8	COVER HARNESS SIZE
9	LOCK CST L
10	550 FEEDER ASSY (with 12-20,22-31,33-39)
11	--
12	SUPPORT NUDGER
13	HOLDER LEFT
14	ACTUATOR NO PAPER
15	GEAR IDLER NUDGER
16	HOLDER RIGHT
17	SHAFT NUDGER
18	GEAR NUDGER
19	ROLL ASSY NUDGER *1
20	CLUTCH ASSY PH (J247)
21	CHUTE ASSY FDR2 (Reference Only) (with 12,18,22-27)
22	BEARING NUDGER
23	COVER ACTUATOR
24	CHUTE BTM ASSY
25	CHUTE TOP ASSY
26	SHAFT FEED
27	CLUTCH ONEWAY NUDGER
28	CLUTCH ONEWAY FEED
29	ROLL ASSY FEED *1
30	HOLDER PIVOT LEFT
31	SPRING EARTH
32	CHUTE 550 LOWER
33	CHUTE 550
34	HOLDER PIVOT RIGHT
35	PLATE FE
36	HARNESS ASSY TRAY2 (J248-J246,P247)
37	HOLDER NO PAPER SENSOR
38	SENSOR NO PAPER (P246)
39	CLAMP-10V0
40	STOPPER TRAY R
41	STOPPER TRAY L

\*1: Periodical Replacement parts (per 200k print)  
3sets [1] of PL7.1.19, 29, PL4.1.2



PL8.1 Xero [Illustration]



JG5016AB

## PL8.1 Xero [List]

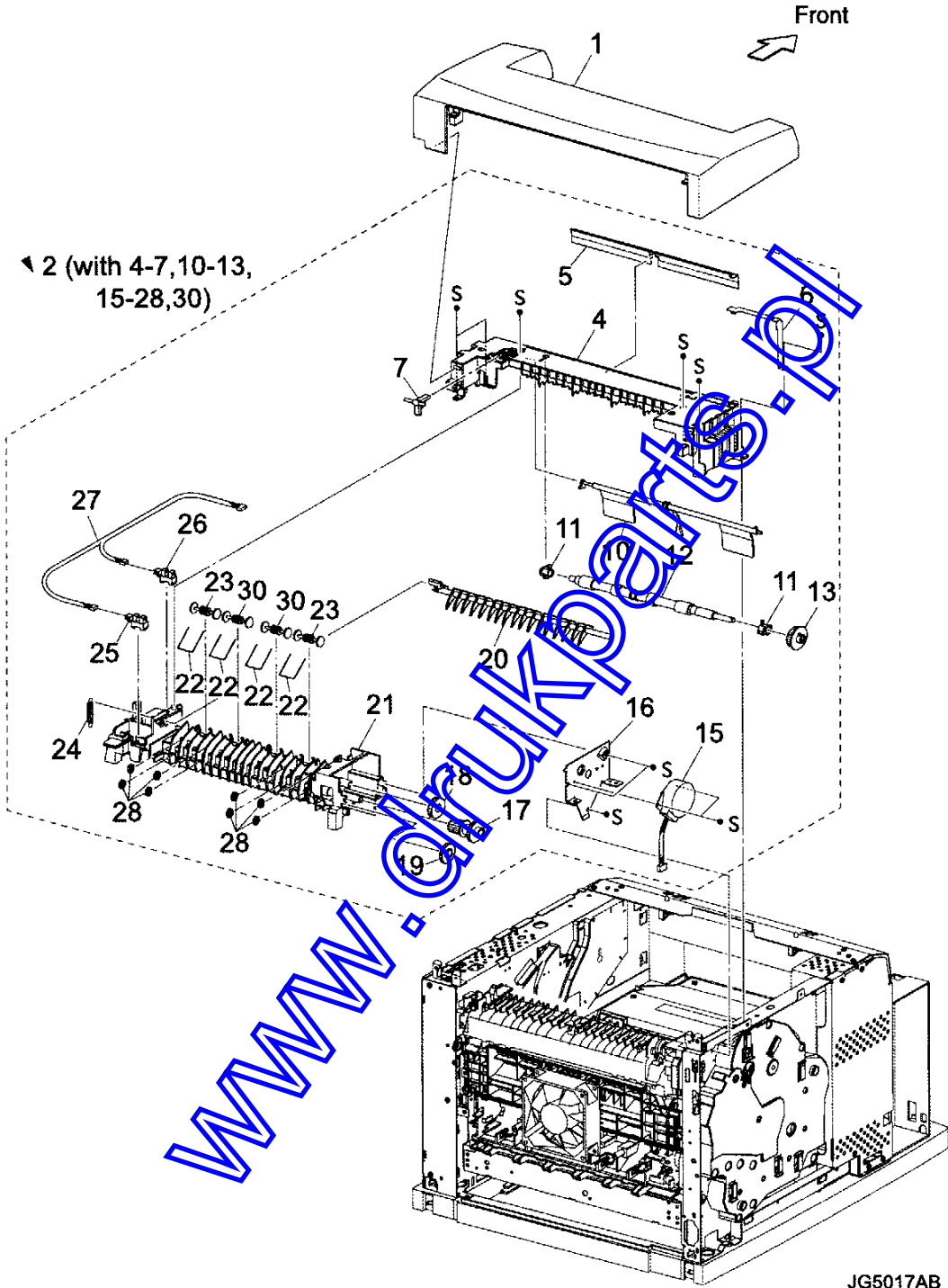
Item	Parts name
1	ROS ASSY (J131,J140,J160,J170)
2	HARNESS ASSY ROS (J13,J14,J16,J17-P131,P140,P141,P160,P170)
3	SHIELD PLATE ROS
4	DUCT FRONT
5	FAN SUB (J270)
6	GUIDE ASSY CRU L (with 7-15)
7	GUIDE SL
8	SPACER SS
9	SPRING SL
10	HOLDER I/L SW1
11	INTERLOCK S/W 24V (J45)
12	INTERLOCK S/W 5V
13	HOLDER I/L SW2
14	LEVER GUIDE
15	GUIDE CRU LEFT
16	COVER GUIDE CRU
17	HARNESS ASSY FUSER (J4647-J46,J47)
18	LEVER FUSER LH
19	LEVER FUSER RH
20	FUSER ASSY *1
21	BTR ASSY *2
22	CHUTE TRANSFER
23	PWBA ASSY ANT (P150)
24	HARNESS ASSY ANT (J15,P150)
25	GUIDE ASSY CRU R (J31) (with 23,24)
26	--
27	--
28	--
29	LEVER LINK
30	LINK GEAR

\*1: Periodical Replacement parts (per 200k print)

\*2: Periodical Replacement parts (per 200k print)

08.01.01	084K1313X	ROS ASSY 24PPM			XEROGRAPHICS	0.200	SPR
08.01.01	084K1315X	ROS ASSY 34PPM			XEROGRAPHICS	0.200	SPR
08.01.02	962K1379X	HARNESS ASSY ROS 24PPM			XEROGRAPHICS	0.001	SPR
08.01.02	962K1384X	HARNESS ASSY ROS 34PPM			XEROGRAPHICS	0.001	SPR
08.01.05	127E8336X	FAN SUB			XEROGRAPHICS	0.020	SPR
08.01.07	032E1839X	GUIDE ASSY SL			XEROGRAPHICS	0.001	SPR
08.01.08	014E4407X	SPACER SS			XEROGRAPHICS	0.001	SPR
08.01.09	809E3862X	SPRING SL			XEROGRAPHICS	0.001	SPR
08.01.11	962K0992X	INTERLOCK SW 24V			XEROGRAPHICS	0.005	SPR
08.01.12	962K2254X	INTERLOCK SW 5V			XEROGRAPHICS	0.005	SPR
08.01.14	011E1305X	LEVER GUIDE			XEROGRAPHICS	0.001	SPR
08.01.15	032E2148X	GUIDE CRU LEFT			XEROGRAPHICS	0.002	SPR
08.01.16	802E3758X	COVER GUIDE CRU			XEROGRAPHICS	0.001	SPR
08.01.17	962K0824X	HARNESS ASSY FUSER 110V			XEROGRAPHICS	0.002	SPR
08.01.17	962K1294X	HARNESS ASSY FUSER 220V			XEROGRAPHICS	0.002	SPR
08.01.18A	011E1290X	LEVER FUSER LH 24PPM			XEROGRAPHICS	0.001	SPR
08.01.18B	011E1336X	LEVER FUSER LH 34PPM			XEROGRAPHICS	0.001	SPR
08.01.19A	011E1291X	LEVER FUSER RH 24PPM			XEROGRAPHICS	0.001	SPR
08.01.19B	011E1337X	LEVER FUSER RH 34PPM			XEROGRAPHICS	0.001	SPR
08.01.20A	604K1486X	FUSER ASSY 24PPM 250 EXIT 110V			XEROGRAPHICS	5.000	SPR
08.01.20B	604K1487X	FUSER ASSY 24PPM 250 EXIT 220V			XEROGRAPHICS	5.000	SPR
08.01.20C	604K2007X	FUSER ASSY 34PPM 110V		110	XEROGRAPHICS	5.00	SPR
08.01.20D	604K2008X	FUSER ASSY 34PPM 220V		220	XEROGRAPHICS	5.00	SPR
08.01.20E	604K2017X	FUSER ASSY 24PPM 500 EXIT 110V		110	XEROGRAPHICS	5.000	SPR
08.01.20F	604K2018X	FUSER ASSY 24PPM 500 EXIT 220V		220	XEROGRAPHICS	5.000	SPR
08.01.21	802K4974X	BTR ASSY			XEROGRAPHICS	5.000	SPR
08.01.22	054E2274X	CHUTE TRANSFER 34PPM			XEROGRAPHICS	0.002	SPR
08.01.22	054K2606X	CHUTE TRANSFER 24PPM			XEROGRAPHICS	0.002	SPR
08.01.23	160K9108X	PWBA ASSY ANT			XEROGRAPHICS	0.002	SPR
08.01.24	962K1293X	HARNESS ASSY ANT			XEROGRAPHICS	0.002	SPR
08.01.29	012K9435X	LEVER LINK			XEROGRAPHICS	0.010	SPR
08.01.30	012E1056X	LINK GEAR 3			XEROGRAPHICS	0.010	SPR
08.01.99	120E2133X	ACTUATOR EXIT			XEROGRAPHICS	0.03	SPR
09.01.02	054K2366X	CHUTE LW EXT 2 ASSY			EXIT	0.050	SPR
09.01.04	059E9893X	ROLLER PINCH EXIT	10.01.23		EXIT	0.002	SPR
09.01.07	809E1474X	SPRING PINCH EXIT	10.1.22		EXIT	0.001	SPR
09.01.09	007E7707X	GEAR 16-49	10.01.17		EXIT	0.001	SPR
09.01.11	127K3693X	MOTOR ASSY EXIT	10.01.15		EXIT	0.020	SPR
09.01.18	013E2334X	BEARING EXIT	10.1.11, 10.2.13		EXIT	0.001	SPR
09.01.20	007E7708X	GEAR 21	10.01.13, 10.2.12		EXIT	0.001	SPR
09.01.26	059E9753X	ROLL PINCH EXIT OCT			OCT	0.002	SPR

PL10.1 500 Paper Exit (1/2) [Illustration]



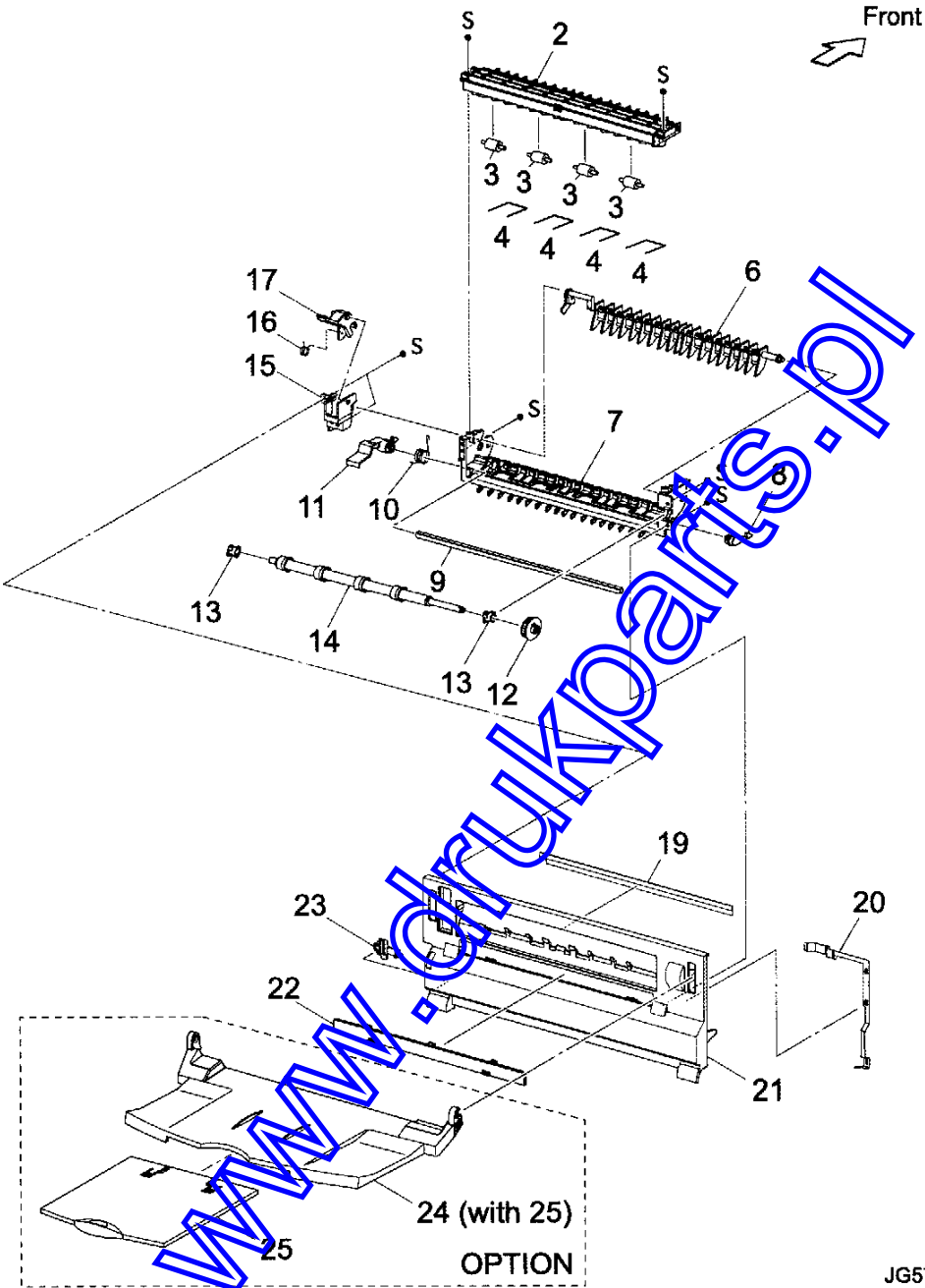
## PL10.1 500 Paper Exit (1/2) [List]

Item	Parts name
1	COVER EXIT 500
2	500 EXIT ASSY (with4-7,10-13,15-28,30)
3	--
4	CHUTE UP EXIT
5	ELIMINATOR EXIT
6	EARTH PLATE EXIT
7	LINK GATE OCT
8	--
9	--
10	ACTUATOR FULL STACK
11	BEARING EXIT
12	ROLL EXIT
13	GEAR 21
14	--
15	MOTOR ASSY EXIT (J103)
16	BRACKET MOTOR EXIT
17	GEAR 16/49
18	GEAR 25-2
19	GEAR 25-1
20	GATE OCT EXIT
21	CHUTE LOW EXIT
22	SPRING PINCH EXIT
23	ROLL PINCH EXIT
24	SPRING GATE OCT
25	SENSOR FACE UP OPEN (P294)
26	SENSOR FULL STACK (P290)
27	HARNESS ASSY EXIT SNR (J29-J290,J291)
28	ROLL EXIT 500
29	--
30	ROLL PINCH EXIT OCT

10.01.01	802E6092X	COVER EXIT 500 OKI			EXIT	0.010	SPR
10.01.05	105E1150X	ELIMINATOR EXIT			EXIT	0.002	SPR
10.01.07	012E1080X	LINK GATE OCT			EXIT	0.020	SPR
10.01.10	120E2167X	ACTUATOR FULL STACK			EXIT	0.020	SPR
10.01.12	059K2497X	ROLL EXIT			EXIT	0.020	SPR
10.01.18	007E7710X	GEAR 25-2			EXIT	0.001	SPR
10.01.19	007E7709X	GEAR 25-1			EXIT	0.001	SPR
10.01.20	050E1931X	GATE OCT EXIT			EXIT	0.020	SPR
10.01.24	809E4010X	SPRING GATE OCT			EXIT	0.001	SPR
10.01.28	059E9793X	ROLLER EXIT 500			EXIT	0.002	SPR

[www.drukparts.pl](http://www.drukparts.pl)

PL10.2 500 Paper Exit (2/2) & Option Face Up Tray [Illustration]



JG5702AB

## PL10.2 500 Paper Exit (2/2) &amp; Option Face Up Tray [List]

Item	Parts name
1	--
2	CHUTE UP FU
3	ROLL PINCH FU
4	SPRING PINCH FU
5	--
6	GATE FU
7	CHUTE LOW FU
8	LEVER LATCH LEFT
9	PIPE LATCH FU
10	SPRING LATCH FU
11	LEVER LATCH RIGHT
12	GEAR 21
13	BEARING EXIT
14	ROLL FU
15	LEVER GATE HOLDER
16	SPRING LEVER GATE
17	LEVER GATE FU
18	--
19	ELIMINATOR EXIT FU
20	EARTH PLATE FU
21	COVER REAR 500
22	COVER DUP
23	STOPPER FSR
*24	TRAY FU A4 ASSY (with 25)
*25	TRAY FU SUB A4

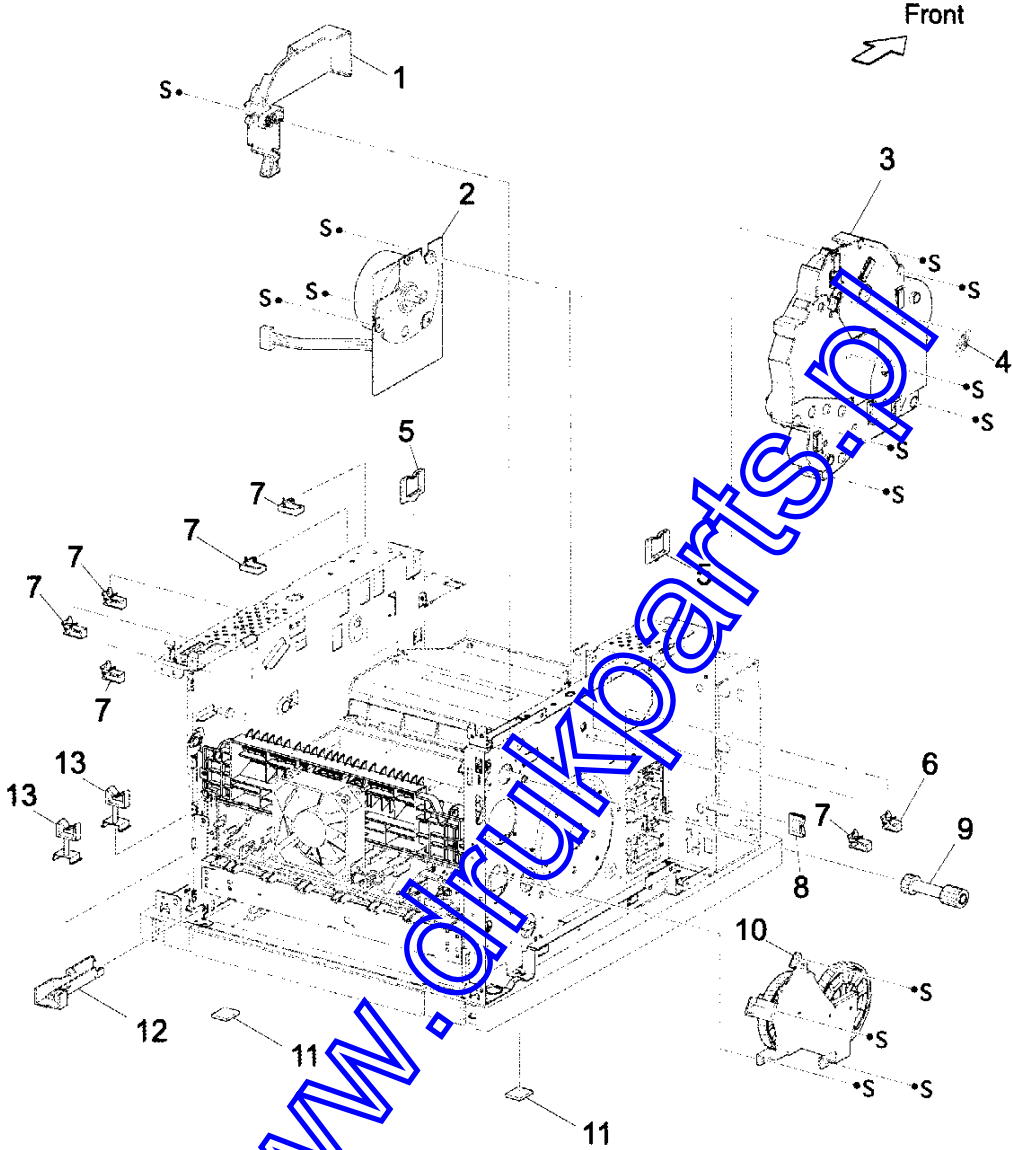
\*OPTION



10.02.03	059E9907X	ROLL PINCH FU			EXIT	0.002	SPR
10.02.24	084K1356X	PKG OPTION FACE UP TRAY ODA			PKG	A/R	OPT
10.02.98	084K1568X	COVER REAR 500 34PPM OKI			EXIT	0.020	SPR
10.02.99	604K1558X	KIT COVER REAR 500	ITEMS 19-21		EXIT	0.010	SPR

[www.drukparts.pl](http://www.drukparts.pl)

PL11.1 Frame & Drive [Illustration]



JG5020AA

PL11.1 Frame & Drive [List]

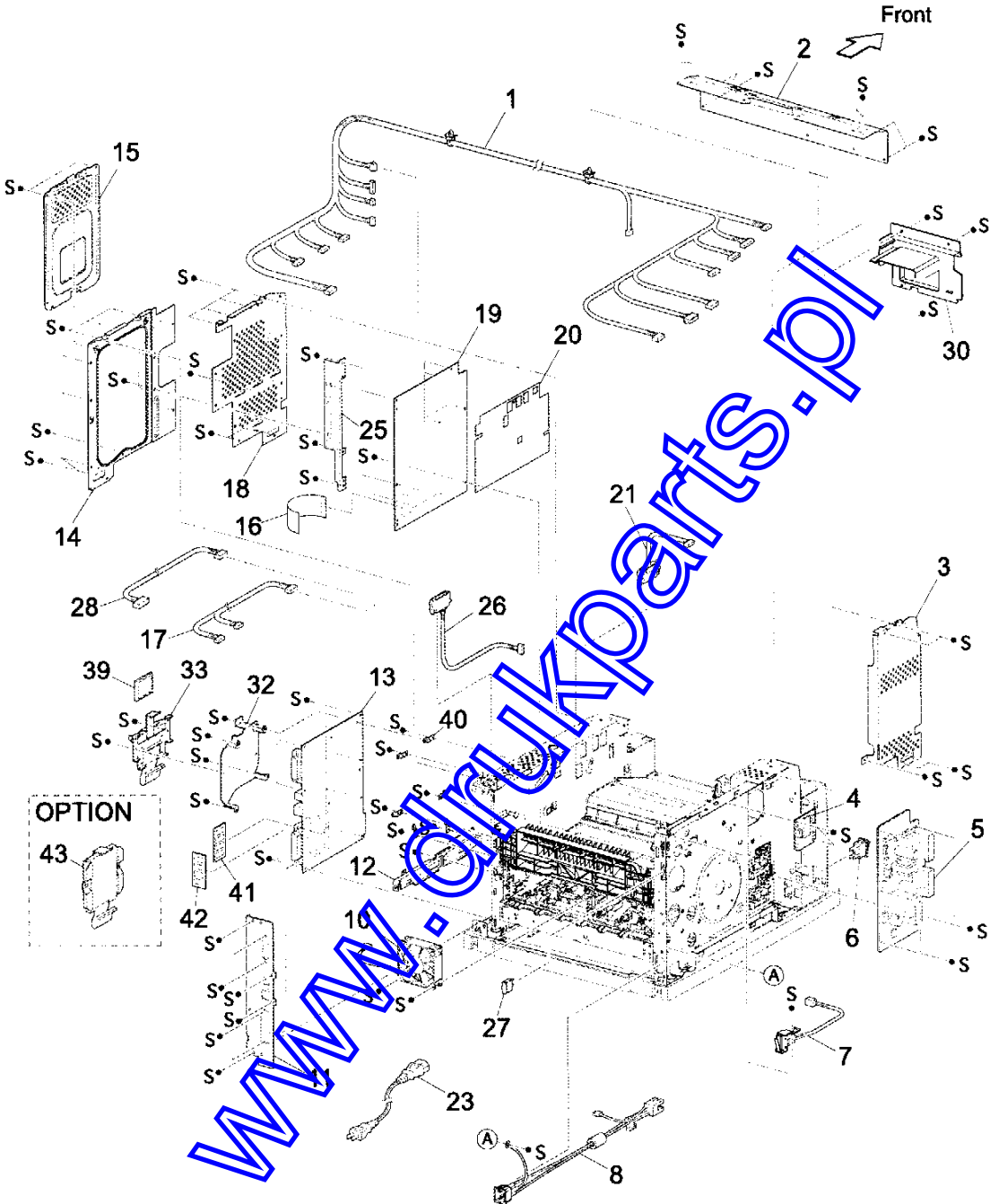
Item	Parts name
1	MOTOR COVER
2	MAIN MOTOR (J43)
3	GEAR ASSY HOUSING
4	SPRING RELEASE
5	CLAMP-EDGE
6	CLAMP-5V0
7	CLAMP-10V0
8	CLAMP-EDGE
9	GEAR 9
10	GEAR ASSY PLATE
11	FOOT
12	GUIDE HARNESS R
13	CLAMP-RWSH
14	--
15	--
16	--

[www.drukparts.pl](http://www.drukparts.pl)

11.01.02	127K3681X	MAIN MOTOR 24PPM			DRIVE	0.010	SPR
11.01.02	127K3682X	MAIN MOTOR 34PPM			DRIVE	0.010	SPR
11.01.03	007K8776X	GEAR ASSY HOUSING 34PPM			DRIVE	0.010	SPR
11.01.03	007K8894X	GEAR ASSY HOUSING 24PPM			DRIVE	0.010	SPR
11.01.04	809E3730X	SPRING RELEASE			DRIVE	0.001	SPR
11.01.09	007E7465X	GEAR 9			DRIVE	0.001	SPR
11.01.10	007K8904X	GEAR ASSY PLATE 24PPM			DRIVE	0.050	SPR
11.01.10	007K8775X	GEAR ASSY PLATE 34PPM			DRIVE	0.050	SPR

[www.drukparts.pl](http://www.drukparts.pl)

PL12.1 Electrical [Illustration]



JG50180A

## PL12.1 Electrical [List]

Item	Parts name
1	HARNESS ASSY LVPS (J10,J11,J18,J27,CNPOW,J141-J42,J41,J1821,P270,J102,P2750,J40,P142,P144,J411,J400)
2	PLATE TIE FRONT
3	SHIELD PLATE LVPS
4	PWBA EXIT MOTOR
5	LVPS
6	POWER SWITCH
7	INTERLOCK S/W REAR (J44)
8	HARNESS ASSY AC100V/AC200V (J48,J480)
9	--
10	FAN MAIN (J244)
11	PANEL REAR
12	BRACKET HANDLE R
13	PWBA ESS
14	SHIELD ASSY ESS
15	SHIELD ASSY WINDOW
16	FFC ASSY ESS (P28-CNVD)
17	HARNESS ASSY CHUTE (J24-P245,P248)
18	SHIELD PLATE HVPS
19	HVPS/MCU
20	MAYLER HVPS
21	HARNESS ASSY FDR1 (J20-P2483)
22	--
23	POWER CORD
24	--
25	BRACKET SHIELD HVPS
26	HARNESS ASSY OCT 1 (J36-P3070)
27	CAP CONNECTOR-DRAWER
28	HARNESS ASSY TONER 2 (J22-P221)
29	--
30	DUCT HIGH
31	--
32	BRACKET PWBA HDD
33	BRACKET ASSY-FLASH
34	--
35	--
36	--
37	--
38	--
39	CF CARD
40	BRACKET BOARD
41	MEMORY OPTION
42	NET OPTION
43	HDD ASSY (OPTION)

12.01.04	160K9199X	PWBA EXIT MOTOR			ELECTRICAL	0.002	SPR
12.01.05A	105K1988X	LVPS 110V			ELECTRICAL	0.018	SPR
12.01.05B	105K2026X	LVPS 220V			ELECTRICAL	0.018	SPR
12.01.06	110K1157X	POWER SWITCH			ELECTRICAL	0.010	SPR
12.01.07	110K1162X	INTERLOCK S/W REAR			ELECTRICAL	0.005	SPR
12.01.10	127E8361X	FAN MAIN			ELECTRICAL	0.020	SPR
12.01.11A	101E1663X	PANEL REAR			ELECTRICAL	0.010	SPR
12.01.13	160K9558X	PWBA ESS 34PPM 110V			ELECTRICAL	A/R	SPR
12.01.13	160K9560X	PWBA ESS 34PPM 220V			ELECTRICAL	A/R	SPR
12.01.13	160K9559X	PWBA ESS 34PPM 220V			ELECTRICAL	A/R	SPR
12.01.13	160K9557X	PWBA ESS 34PPM 110V			ELECTRICAL	A/R	SPR
12.01.16	962K1346X	FFC ASSY ESS			ELECTRICAL	0.001	SPR
12.01.17	962K1419X	HARNES ASSY CHUTE			ELECTRICAL	0.001	SPR
12.01.19	675K0558X	HVPS/MCU 34PPM 220V ODA			ELECTRICAL	0.030	SPR
12.01.19	675K0565X	HVPS/MCU 24PPM 1200DPI 220V OEL			ELECTRICAL	0.030	SPR
12.01.19	675K0679X	HVPS/MCU 24PPM 1200DPI 120V ODA			ELECTRICAL	0.030	SPR
12.01.19	675K0680X	HVPS/MCU 24PPM 1200DPI 220V ODA			ELECTRICAL	0.030	SPR
12.01.19	675K0553X	HVPS/MCU 34PPM 120V ODA			ELECTRICAL	0.030	SPR
12.01.21	962K0816X	HARNES ASSY FDR1			ELECTRICAL	0.001	SPR
12.01.26	962K1990X	HARNES ASSY OCT 1			ELECTRICAL	0.001	SPR
12.01.28	962K1429X	HARNES ASSY TONER 2			ELECTRICAL	0.001	SPR
12.99.91	695K1197X	PAD ASSY 250	20 LOT ORDER		PKG	A/R	SPR
12.99.92	695K1152X	PAD ASSY 550	20 LOT ORDER		PKG	A/R	SPR
12.99.96	695K1192X	PAD ASSY CRU	20 LOT ORDER		PKG	A/R	SPR
12.99.97	696E2154X	BOX IOT ODA 24PPM	20 LOT ORDER		PKG	A/R	SPR
12.99.97	696E2657X	BOX IOT OEL 34PPM	20 LOT ORDER		PKG	A/R	SPR
12.99.97	696E2656X	BOX IOT OEL 24PPM	20 LOT ORDER		PKG	A/R	SPR
12.99.97	696E2155X	BOX IOT ODA 34PPM	20 LOT ORDER		PKG	A/R	SPR
12.99.98	604K1534X	DIAGNOSTIC TOOL			ELECTRICAL	A/R	SPR

www.druidparts.pl

20.01.05	962K0843X	HARNESS ASSY FDR2			OPT FDR	0.002	SPR
20.01.17	127K3618X	MOTOR FEEDER			OPT FDR	0.020	SPR
20.01.18	110K1163X	OPT ASSY SIZE	W/ 20.1.40		OPT FDR	0.005	SPR
20.01.19	962K1757X	HARNESS ASSY SIZE FDR1			OPT FDR	0.001	SPR
20.01.21	802E6020X	FRAME CVR L550			OPT FDR	0.010	SPR
20.01.22	017E9673X	FOOT			OPT FDR	0.010	SPR
20.01.28	802E6021X	FRAME CVR R550			OPT FDR	0.010	SPR
20.01.34	160K8672X	PWBA FEEDER 550			OPT FDR	0.020	SPR
20.01.35	962K1427X	HARNESS ASSY SIZE FDR2			OPT FDR	0.001	SPR
20.02.01	022K6612X	550 FEEDER OPTION			OPT FDR	0.060	SPR

[www.drukparts.pl](http://www.drukparts.pl)



21.01.01	802K4680X	HSG UPPER ASSY 34PPM			DUPLEX	0.010	SPR
21.01.01	802K4679X	HSG UPPER ASSY 24PPM			DUPLEX	0.010	SPR
21.01.03	809E3714X	SPRING PINCH			DUPLEX	0.001	SPR
21.01.04	059E9750X	ROLL PINCH			DUPLEX	0.002	SPR
21.01.07	962K1341X	HARNESS ASSY DUP 34PPM			DUPLEX	0.002	SPR
21.01.07	962K0828X	HARNESS ASSY DUP 24PPM			DUPLEX	0.002	SPR
21.01.12	802E6101X	COVER TOP ODC 24PPM			DUPLEX	0.010	SPR
21.01.12	802E6106X	COVER TOP ODC 34PPM			DUPLEX	0.010	SPR
21.01.13	011E1401X	LEVER LATCH RIGHT 34PPM			DUPLEX	0.020	SPR
21.01.13	011E1321X	LEVER LATCH RIGHT 24PPM			DUPLEX	0.020	SPR
21.01.15	011E1327X	LEVER LATCH LEFT 34PPM			DUPLEX	0.020	SPR
21.01.15	011E1282X	LEVER LATCH LEFT 24PPM			DUPLEX	0.020	SPR
21.01.16	809E3717X	SPRING LATCH			DUPLEX	0.001	SPR
21.01.17	059E9781X	ROLLER DUP			DUPLEX	0.020	SPR
21.01.20	007E7452X	GEAR ROLLER			DUPLEX	0.001	SPR
21.01.21	007E7593X	GEAR IDLE 29			DUPLEX	0.001	SPR
21.01.22	007E7644X	GEAR IDLE 47 34PPM			DUPLEX	0.001	SPR
21.01.22	007E7594X	GEAR IDLE 39 24PPM			DUPLEX	0.001	SPR
21.01.23	007E7637X	GEAR IDLE 77 34PPM			DUPLEX	0.001	SPR
21.01.23	007E7595X	GEAR IDLE 49 24PPM			DUPLEX	0.001	SPR
21.01.24	007E7636X	GEAR IDLE 57-37			DUPLEX	0.001	SPR
21.01.25	802E6099X	COVER LEFT ODC 24PPM			DUPLEX	0.010	SPR
21.01.25	802E6104X	COVER LEFT ODC 34PPM			DUPLEX	0.010	SPR
21.01.27	110E1020X	SWITCH DUPLEX	21.1.19		DUPLEX	0.005	SPR
21.01.29	127E8320X	MOTOR DUPLEX			DUPLEX	0.020	SPR
21.01.32	160K8675X	PWBA DUPLEX			DUPLEX	0.020	SPR
21.01.33	127E8321X	FAN DUPLEX			DUPLEX	0.020	SPR
21.01.34	130E8274X	SENSOR DUP			DUPLEX	0.005	SPR
21.01.35	962K1340X	HARNESS ASSY DUP SNR			DUPLEX	0.001	SPR
21.01.36	809E5096X	SPRING ACTUATOR			DUPLEX	0.001	SPR
21.01.37	120E2176X	ACTUATOR DUP 34PPM			DUPLEX	0.020	SPR
21.01.37	604K1676X	ACTUATOR DUP 24PPM			DUPLEX	0.020	SPR
21.01.39	809E3715X	SPRING DAMPER 24PPM			DUPLEX	0.001	SPR
21.01.39	809E3716X	SPRING DAMPER 34PPM			DUPLEX	0.001	SPR
21.01.41	802E6105X	COVER RIGHT ODC 34PPM			DUPLEX	0.010	SPR
21.01.41	802E6100X	COVER RIGHT ODC 24PPM			DUPLEX	0.010	SPR
21.99.98	695K1154X	PAD ASSY DUPLEX 24PPM	20 LOT ORDER		PKG	A/R	SPR
21.99.98	695K1155X	PAD ASSY DUPLEX 34PPM	20 LOT ORDER		PKG	A/R	SPR
21.99.99	696E2159X	BOX DUPLEX ODC	20 LOT ORDER		PKG	A/R	SPR

23.01.01	604K1565X	COVER OCT ODC			OCT	0.010	SPR
23.01.02	036E9155X	WEIGHT			OCT	0.050	SPR
23.01.04	802E6079X	COVER REAR ODC			OCT	0.020	SPR
23.01.06	127K3629X	MOTOR ASSY OCT			OCT	0.020	SPR
23.01.07	007E7483X	GEAR 45			OCT	0.001	SPR
23.01.08	007E7484X	GEAR 19/37			OCT	0.001	SPR
23.01.09	849E0272X	BRCKET MOTOR OCT			OCT	0.001	SPR
23.01.11	007E7482X	GEAR 19			OCT	0.001	SPR
23.01.15	120E2166X	ACTUATOR FULL STACK			OCT	0.020	SPR
23.01.16	059K2512X	ROLL OCT LOWER			OCT	0.020	SPR
23.01.20	127K3630X	MOTOR ASSY OFFSET			OCT	0.020	SPR
23.01.22	160K8674X	PWBA OCT			OCT	0.020	SPR
23.01.25	962K2035X	HARNESS ASSY OCT			OCT	0.002	SPR
23.01.26	962K1344X	HARNESS ASSY OCT SNR			OCT	0.002	SPR
23.01.27	121K2867X	SOLENOID ASSY GATE			OCT	0.050	SPR
23.01.28	007E7481X	GEAR CAM			OCT	0.001	SPR
23.01.29	962K0840X	HARNESS ASSY REAR COVER			OCT	0.001	SPR
23.01.31	120E2127X	ACTUATOR OCT			OCT	0.020	SPR
23.01.32	809E3733X	SPRING ACTUATOR			OCT	0.001	SPR
23.01.33	809E3734X	SPRING PINCH			OCT	0.001	SPR
23.01.34	059E9754X	ROLL PINCH			OCT	0.002	SPR
23.01.35	054K2331X	CHUTE OFFSET ASSY			OCT	0.020	SPR
23.01.36	059K2511X	ROLL OCT UPPER			OCT	0.020	SPR
23.01.39	809E5168X	SPRING PINCH EXIT			OCT	0.001	SPR
23.01.40	050K5000X	TRAY ASSY OCT ODC			OCT	0.050	SPR
23.01.46	962K1445X	HARNESS ASSY OCT MOTOR			OCT	0.001	SPR
23.99.98	695K1153X	PAD ASSY OCT	20 LOT ORDER		PKG	A/R	SPR
23.99.99	696E2161X	BOX OCT ODC	20 LOT ORDER		PKG	A/R	SPR

[www.drukparts.pl](http://www.drukparts.pl)