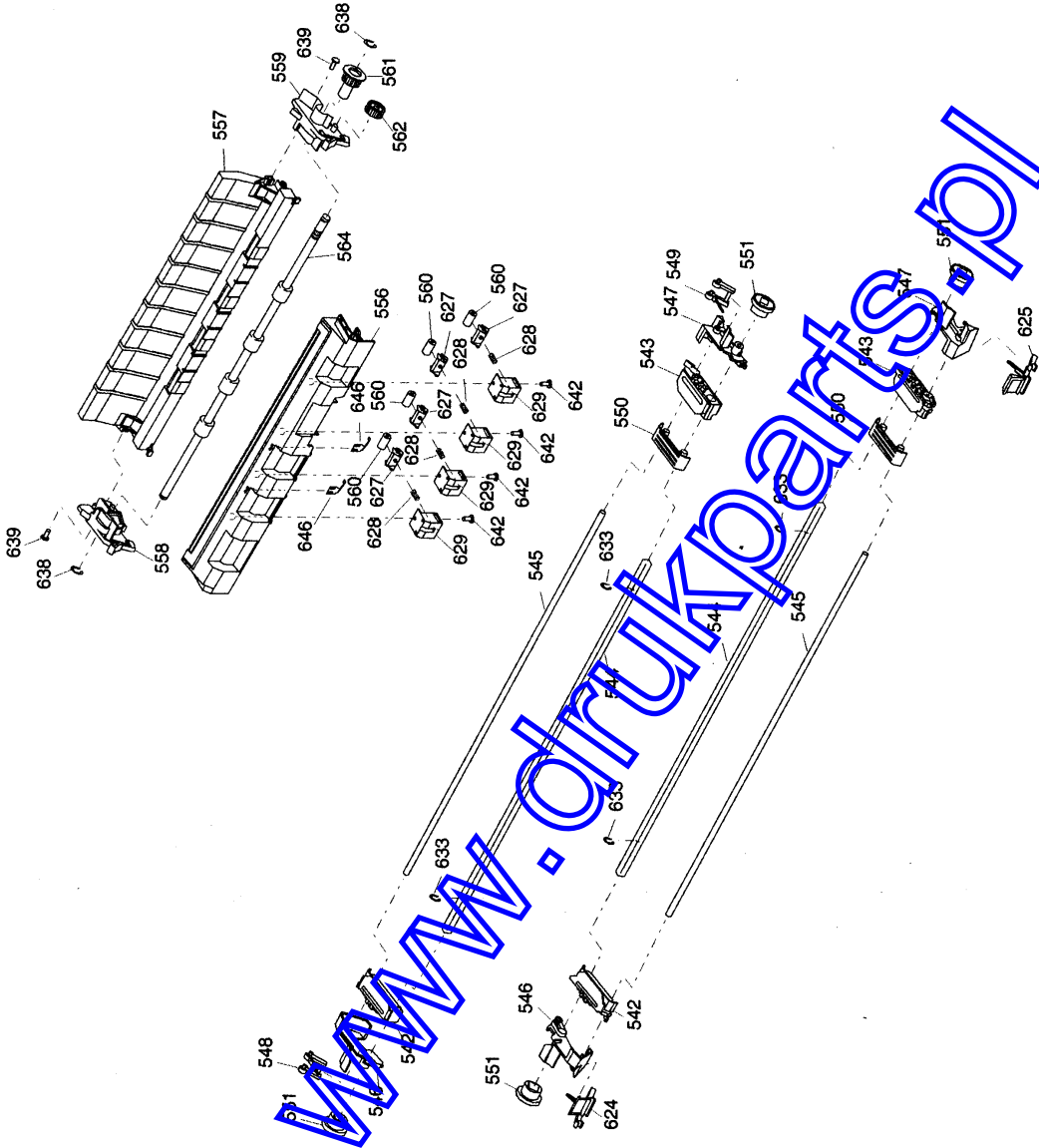


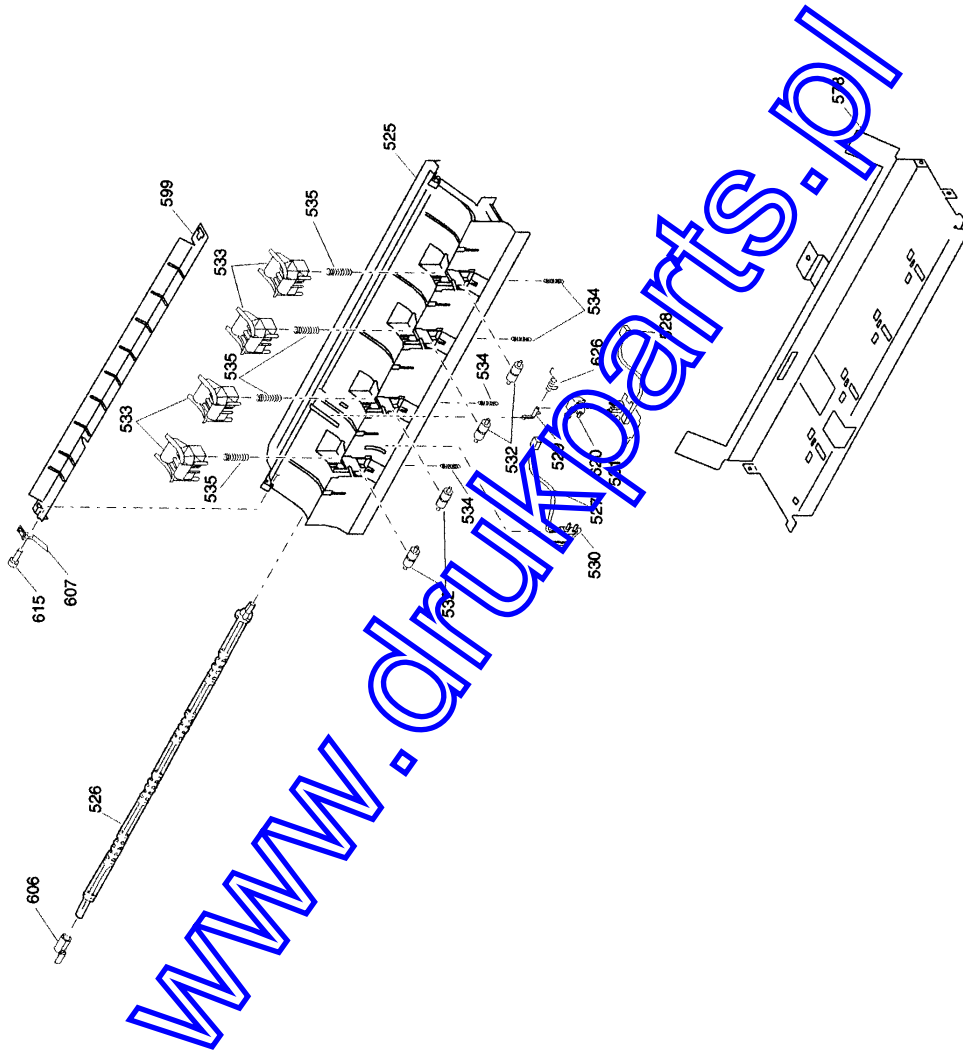
EPSON
FX980

Page 8



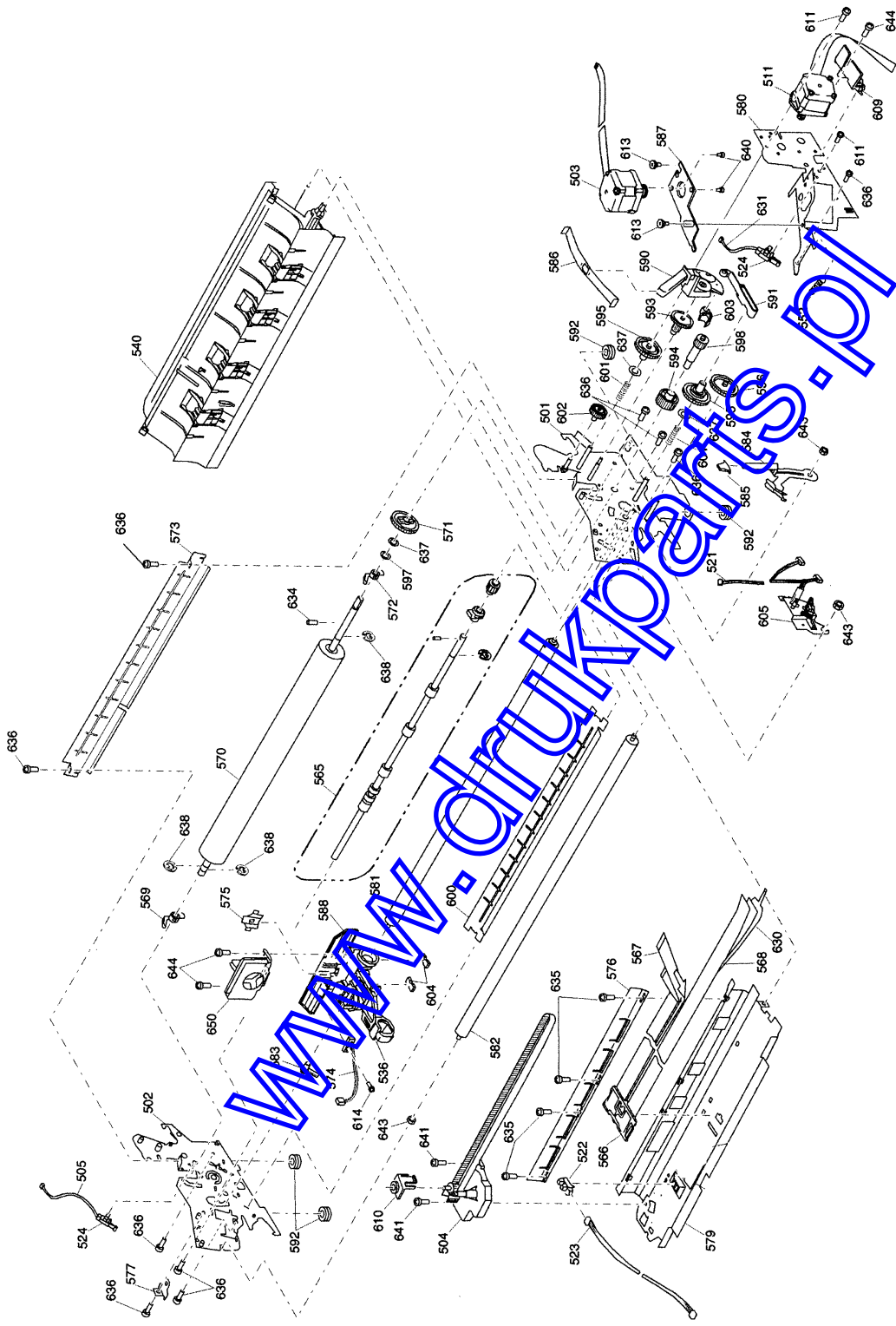
FX-980 No.4 Rev.01

10082

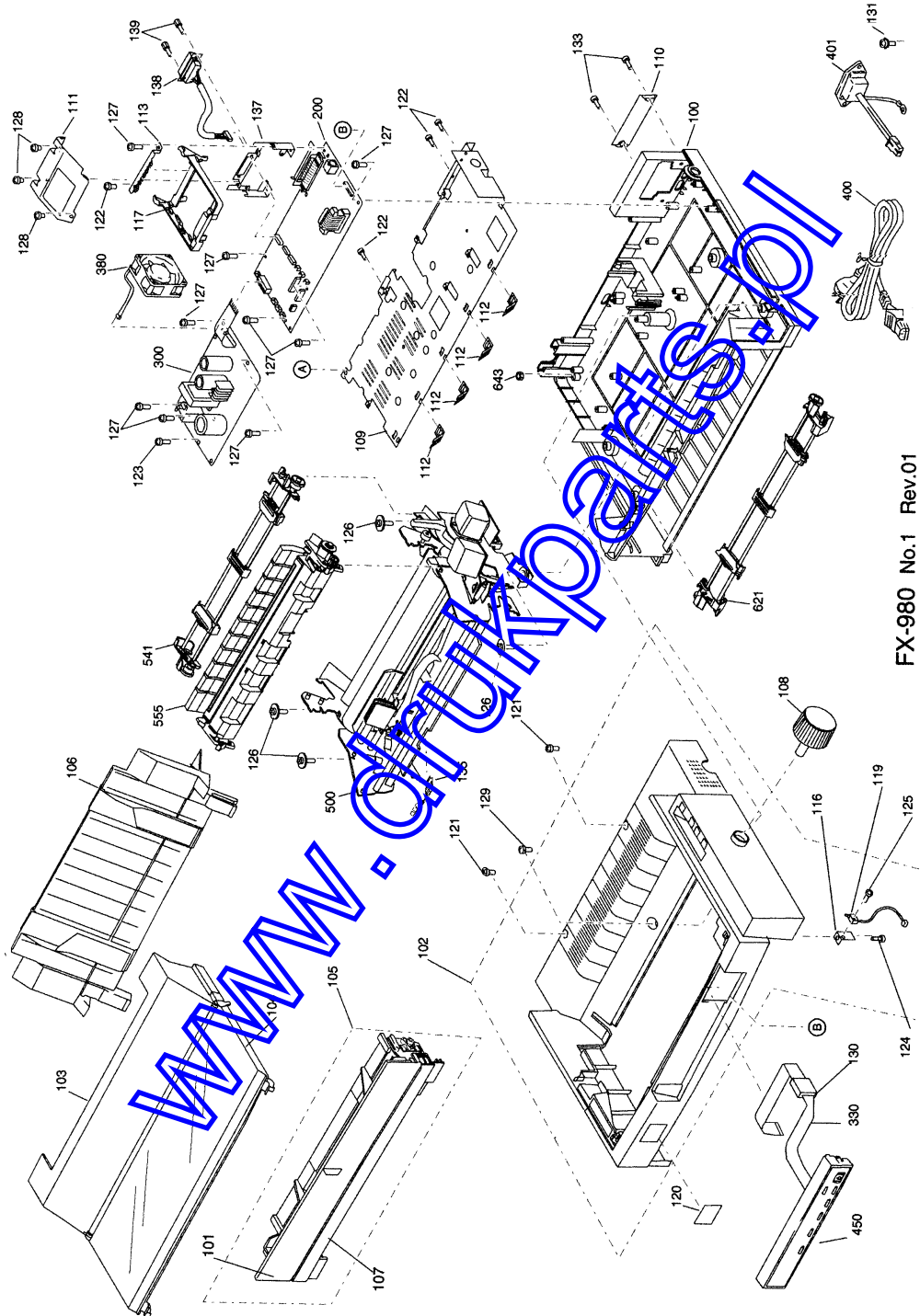


EPSON FX980

Page 6



FX-980 No.2 Rev.01 10082



FX-980 No.1 Rev.01

EPSON FX980

Page 4

REF	PART NO	DESCRIPTION	SPEC	QTY
576	1044093	PAPER GUIDE, SUPPORT		1
577	1025280	HOLDER, DRIVEN PULLEY		1
578	1044086	FRAME, REAR		1
579	1044085	FRAME, FRONT		1
580	1028578	FRAME, SUB, RIGHT		1
581	1044087	SHAFT, CR, GUIDE, REAR		1
582	1044088	SHAFT, CR, GUIDE, FRONT		1
583	1025331	BUSHING, PARALLEL, ADJUST		1
584	1025332	LEVER, GAP, ADJUST		1
585	1039412	CAP, LEVER;W	ECW	1
586	1044129	COVER, RELEASE		1
587	1025349	MOUNTING PLATE, MOTOR, CR		1
588	1025346	HOLDER, RIBBON MASK		1
590	1039410	LEVER, RELEASE;W	ECW	1
591	1028357	CAM, CLUTCH, TRACTOR		1
592	1025335	BASE RUBBER		4
593	1008716	COMBINATION GEAR, 31, 5, 8		1
594	1005224	SPUR GEAR, 27		1
595	1013093	SPUR GEAR, 34.5		2
596	1005226	SPUR GEAR, 34		1
597	B101253990	LEAF SPRING	8.2X0.26X1.5	1
598	1028359	INTERMITTENT GEAR		1
599	1044094	PAPER GUIDE, MIDDLE		1
600	1044095	PAPER GUIDE, FRONT		1
601	1005232	COMPRESSION SPRING, 200		2
602	1025360	SPUR GEAR, 21		1
603	1039411	LEVER, RELEASE, TRANSMISSION;W	ECW	1
604	1030844	OIL PAD		2
605	2029945	DETECTOR ASSY., PG		1
606	1029076	LEVER, RELEASE, DETECTOR		1
607	1025375	GROUNDING PLATE, PG, MIDDLE		1
609	1026551	HOLDER, CABLE		1
610	1026620	COVER, DRIVEN PULLEY		1
611	B010303411	C.B.SCREW	M3X8	2
613	1005416	SHAFT, MOUNT, CR		2
614	B010302211	C.B.SCREW	M2.5X5	1
615	B310204311	C.B.B. SCREW	M3X8	1
620	1025323	LEVER, DETECTOR, PE, REAR		1
621	1044167	TRACTOR ASSY., FRONT		1
624	1039417	LEVER, TR, LEFT, FRONT	ECW	1
625	1039418	LEVER, TR, RIGHT, FRONT	ECW	1
626	1025325	TORSION SPRING, 0.26		1
627	1044102	HOLDER, PAPER EJECT, DRIVEN		4
628	1044104	COMPRESSION SPRING, 0.39		4
629	1044103	HOLDER, PAPER EJECT, SPRING		4
630	2029871	CABLE, DET. CLUTCH		1
631	2021438	HARNES, PE, RIGHT		1
633	B150300911	RETAINING RING	TYPE-E(6)	4
634	1031702	SPRING PIN, Z/N, F/B		1
635	B302704211	C.P.S. SCREW	M3X6	4
636	B300204211	C.B.S. SCREW	M3X6	10
637	B100166012	PLAIN WASHER	8X0.5X15	3
638	B160101412	RETAINING RING	TYPE-C	5
639	1044397	C.B.SCREW, 3*14, F/ZN		2
640	B010303311	C.B.SCREW	M3X6	2
641	B300204311	C.B.S. SCREW	M3X8	2
642	1019830	C.F.P-TITE SCREW, 2.6X8, F/ZN		4
643	B070200411	HEXAGON NUT	M4	4
644	B300204411	C.B.S. SCREW	M3X10	3
646	1044105	LEAF SPRING, PAPER EJECT		2
650	F051000	PRINT HEAD, DH18-0B0		1
N/A	3002665	UTILITY CD-ROM		1
N/A	4010001	USER'S GUIDE		1
END				

REF	PART NO	DESCRIPTION	SPEC	QTY
ZD55	2004320	ZENER DIODE	150MA 400MW 5.2W 5.5V	1
ZD81	2011463	ZENER DIODE	150MA 400MW 6.9V 7.2V	1
ZD82	2011463	ZENER DIODE	150MA 400MW 6.9V 7.2V	1
ZD83	2011463	ZENER DIODE	150MA 400MW 6.9V 7.2V	1
ZD84	2011463	ZENER DIODE	150MA 400MW 6.9V 7.2V	1
ZD85	2011463	ZENER DIODE	150MA 400MW 6.9V 7.2V	1
ZD86	2011464	ZENER DIODE	150MA 400W 6.9V 7.2V	1
ZD87	2018990	ZENER DIODE		1
330	2011447	HARNESS		1
400	2006741	POWER CABLE, 240V	BS31303SA-SR-10A	1
401	2030161	HARNESS		1
450	1044482	HOUSING ASSY., PANEL		1
500	2030826	PRINTER MECHANISM(ASP),	M-3L10-100	1
501	1039889	FRAME ASSY., RIGHT		1
502	1039892	FRAME ASSY., LEFT		1
503	2026605	MOTOR, CR	DC3.0W/1.1A/1.3W ST	1
504	1044163	RD ASSY.		1
505	2029875	HARNESS, RE, LEFT		1
506-510	NOT USED			
511	2019040	MOTOR, PF	DC3.4W/0.4A/2.6W	1
521	2019039	HARNESS, PG		1
522	2021854	DETECTOR, HP	4V, 30MA, 100MW,	1
523	2029872	HARNESS, HP		1
524	2014328	CONNECTOR SWITCH;B		2
525	1044091	PAPER GUIDE		1
526	1044098	SHAFT, RELEASE		1
527	2029874	HARNESS, PE, FRONT		1
528	2029873	HARNESS, PE, REAR		1
529	1025324	LEVER, PE, SUPPORT		1
530	2019011	DETECTOR, PE, FRONT	0V, 0A, 0W,	1
531	1005727	DETECTOR ASSY., REAR		1
532	1005213	ROLLER, PF, DRIVEN, LOWER		4
533	1047761	ROLLER ASSY, PF		4
534	1005215	EXTENSION SPRING, 20		4
535	1025363	COMPRESSION SPRING, 10W		4
536	1044188	CA ASSY.		1
540	1044161	PAPER GUIDE ASSY, REAR		1
541	1044168	TRACTOR ASSY., REAR		1
542	1039341	TRACTOR LEFT;W	ECW	2
543	1039342	TRACTOR RIGHT;W	ECW	2
544	1044106	SHAFT, TR, DRIVE		2
545	1044107	SHAFT, TR, GUIDE		2
546	1039415	FRAME, TR, LEFT;W	ECW	2
547	1039416	FRAME, TR, RIGHT;W	ECW	2
548	1025289	LEVER, TR, LEFT, REAR		1
549	1025290	LEVER, TR, RIGHT, REAR		1
550	1025296	PAPER SUPPORT		2
551	1039507	SPUR GEAR, 20		4
552	1025350	EXTENSION SPRING, 15.7		1
555	1044165	PAPER EJECT ASSY.		1
556	1044099	COVER, PAPER EJECT		1
557	1044166	FRAME, PAPER EJECT, BASE		1
558	1039413	FRAME, PAPER EJECT, LEFT	ECW	1
559	1039414	FRAME, PAPER EJECT, RIGHT	ECW	1
560	1025306	ROLLER, PAPER EJECT, DRIVEN		4
561	1025310	SPUR GEAR, 15		1
562	1005245	SPUR GEAR, 18		1
564	1044101	ROLLER, PAPER EJECT, DRIVE		1
565	1044158	ROLLER ASSY., PF, DRIVE		1
566	1025334	HOLDER, HEAD, CABLE		1
567	2029869	CABLE, HEAD, LOWER		1
568	2029870	CABLE, HEAD, UPPER		1
569	1025355	BUSHING, 8, LEFT		1
570	1044096	PLATEN		1
571	1031612	SPUR GEAR, 36		1
572	1025285	BUSHING, 8, RIGHT		1
573	1044092	COVER, PLATEN		1
574	2018904	DETECTOR ASSY., PW		1
575	1025345	RIBBON MASK		1

EPSON FX980

Page 2

REF	PART NO	DESCRIPTION	SPEC	QTY
IC6	X422350069	TTL-IC SN74LS06NS-TPL		1
IC7	2013458	RS-232 TRANSCEIVER IC		1
IC8	2014681	EEPROM, AT93C46-10SC	SOP, 1K BIT, 8	1
IC9	2000592	HYBRID IC SLA7024M		1
Q1	2011623	TRANSISTOR	50V, 100MA, 200MW, 100, 0,	1
Q10	2027239	TRANSISTOR	85V, 3A, 30W, 0, 0,	1
Q11	2027239	TRANSISTOR	85V, 3A, 30W, 0, 0,	1
Q12	2027239	TRANSISTOR	85V, 3A, 30W, 0, 0,	1
Q13	2027239	TRANSISTOR	85V, 3A, 30W, 0, 0,	1
Q14	2027239	TRANSISTOR	85V, 3A, 30W, 0, 0,	1
Q15	2027239	TRANSISTOR	85V, 3A, 30W, 0, 0,	1
Q16	2027239	TRANSISTOR	85V, 3A, 30W, 0, 0,	1
Q17	2027239	TRANSISTOR	85V, 3A, 30W, 0, 0,	1
Q18	2027239	TRANSISTOR	85V, 3A, 30W, 0, 0,	1
Q19	2027239	TRANSISTOR	85V, 3A, 30W, 0, 0,	1
Q2	2027239	TRANSISTOR	85V, 3A, 30W, 0, 0,	1
Q20	2022324	TRANSISTOR	50V, 1.2A, 1300MW, 100, 0,	1
Q3	2027239	TRANSISTOR	85V, 3A, 30W, 0, 0,	1
Q4	2027239	TRANSISTOR	85V, 3A, 30W, 0, 0,	1
Q5	2027239	TRANSISTOR	85V, 3A, 30W, 0, 0,	1
Q6	2027239	TRANSISTOR	85V, 3A, 30W, 0, 0,	1
Q7	2027239	TRANSISTOR	85V, 3A, 30W, 0, 0,	1
Q8	2027239	TRANSISTOR	85V, 3A, 30W, 0, 0,	1
Q9	2027239	TRANSISTOR	85V, 3A, 30W, 0, 0,	1
ZD1	2026808	ZENER DIODE		1
300	2024567	BOARD ASSY., POWER SUPPLY 220/240V		1
CN1	2000295	CONNECTOR	2 PIN	1
CN2	2018864	HARNESS		1
CN3	X600440120	CONNECTOR	2 PIN	1
D1	2013050	DIODE		1
D2	X320011449	DIODE	100V, 0.6A, 0.2W	1
D51	1013213	HEAT SINK		1
D51	2011510	DIODE	100V, 5A, 0W,	1
D52	2004284	DIODE	200V, 0.5A, 0W,	1
D55	2019126	DIODE		1
D81	X320011201	DIODE	SI 60V 150MA	1
D82	X320011201	DIODE	SI 60V 150MA	1
D83	X320011201	DIODE	SI 60V 150MA	1
D84	X320011201	DIODE	SI 60V 150MA	1
D85	X320011201	DIODE	SI 60V 150MA	1
D86	X320011201	DIODE	SI 60V 150MA	1
DB1	2010688	DIODE BRIDGE		1
F1	2019130	FUSE	250V, 2A,	1
F1	X502100100	FUSE HOLDER		2
IC1	2001638	VOLTAGE REGULATOR		1
IC51	X440034940	LINEAR IC	BIPOLAR SWREG DIP	1
IC52	X440072920	IC	BIPOLAR DUAL COMP.	1
L1	2019131	CHOKE COIL	15MH, 800MA,	1
L51	2019837	CHOKE COIL	470UH, 700MA,	1
PC1	2013130	PHOTO CONDUCTOR	0V, 0A, 0W,	1
Q1	2019003	FET	900V, 3A, 0W,	1
Q1	X520000160	HIGH POWER TRANSISTOR		1
Q2	2000623	TRANSISTOR	50V 2A 900MW	1
Q3	X300101589	TRANSISTOR	PNP 50V 150MA 400MW	1
Q31	2018987	FET	30V, 1A, 1W,	1
Q32	2018986	TRANSISTOR	50V, 100MA, 0W, 56, 0,	1
Q51	X300168009	TRANSISTOR, 2SA1680-TPE6	PNP 50V 2A 900MW	1
Q53	X300101589	TRANSISTOR	PNP 50V 150MA 400MW	1
Q54	X302181589	TRANSISTOR	NPN 50V 150MA 400MW	1
Q55	2018985	TRANSISTOR	50V, 100MA, 0W, 0, 0,	1
Q81	2018984	TRANSISTOR	50V, 100MA, 0W, 0, 0,	1
Q82	2018984	TRANSISTOR	50V, 100MA, 0W, 0, 0,	1
T1	2019021	TRANSFORMER		1
TH1	2019006	THERMISTOR		1
TH2	2019006	THERMISTOR		1
ZD51	2011463	ZENER DIODE	150MA 400MW 6.9V 7.2V	1
ZD52	2018990	ZENER DIODE		1
ZD53	2011464	ZENER DIODE	150MA 400W 6.9V 7.2V	1
ZD54	2011463	ZENER DIODE	150MA 400MW 6.9V 7.2V	1

SHADED ROWS INDICATE IMPORTANT ITEMS

REF	PART NO	DESCRIPTION	SPEC	QTY
100	1044174	HOUSING ASSY., LOWER		1
101	1044120	COVER, FRONT		1
102	1044193	HOUSING ASSY., UPPER		1
103	1044112	COVER, PRINTER, REAR		1
104	1044166	COVER ASSY., PRINTER		1
105	1044192	EDGE GUIDE ASSY., FRONT		1
106	1044169	EDGE GUIDE ASSY., REAR		1
107	1044121	COVER, BOTTOM		1
108	1039462	KNOB;W	ECW	1
109	1044125	SHIELD PLATE		1
110	1037223	COVER, CONNECTOR, UPPER	ECW	1
111	1025668	SHIELD PLATE, UPPER		1
112	1005480	GROUNDING PLATE		4
113	1044135	GROUNDING PLATE, I/F		1
116	1026338	HOLDER, DETECTOR		1
117	1039408	GUIDE, I/F BOARD;B;W	ECW	1
119	2018967	DETECTOR ASSY., CASE OPEN		1
120	1046472	LOGO PLATE		1
121	B310206511	C.B.B. SCREW	M4X14	2
122	1006901	C.B.C-LAMITITE	M3X4	4
123	B310204511	C.B.B. SCREW	M3X2	1
124	B310204311	C.B.B. SCREW	M3X8	1
125	B010350211	C.B.SCREW	M2X7	1
126	1025409	PRINTER MECHANISM MOUNTING SCREW		4
127	B310204511	C.B.B. SCREW	M3X12	9
128	B300200111	C.B.S. SCREW	M3X4	3
129	1028106	C.B.B.SCREW, 4X14, F/ZR		1
130	2020073	FERRITE CORE		1
131	B045800115	C.B.(O) SCREW 4X8 F/ZG	M4X8 F/ZG	1
133	1002674	C.B.S-TITE SCREW	M3X12	2
135	1045274	GROUNDING PLATE, PANEL		1
137	1011863	GROUNDING PLATE, PRINTER		1
138	2029934	HARNESS		1
139	X610058724	CONNECTOR LOCK NUT		2
380	2021422	FAN		1
200	2028925	BOARD ASSY., MAIN	5520A, STANDARD	1
CN1	2020986	CONNECTOR	36, 2.159MM	1
CN10	2017936	CONNECTOR	4,	1
CN11	2005108	CONNECTOR	5 PIN	1
CN12	2003680	CONNECTOR	2,	1
CN13	2017929	CONNECTOR	4,	1
CN14	2022403	CONNECTOR	10,	1
CN15	2017940	CONNECTOR	22,	1
CN16	2003679	CONNECTOR	2,	1
CN17	X600440120	CONNECTOR	2 PIN	1
CN18	X601110700	CONNECTOR	11 PIN	1
CN2	1025510	GROUNDING PLATE, I/F		1
CN2	2007160	CONNECTOR	36PIN	1
CN3	2019114	CONNECTOR	10,	1
CN4	X600440300	CONNECTOR	3 PIN	1
CN5	2007097	CONNECTOR	3,	1
CN6	X600440700	CONNECTOR	2 PIN	1
CN7	2010111	CONNECTOR	4,	1
CN8	2008494	CONNECTOR	18,	1
CN9	2019112	CONNECTOR	16,	1
D1	2012708	DIODE	35V, 225MA	1
D2	2017977	DIODE		1
D3	2017977	DIODE		1
D4	2017977	DIODE		1
D5	2017977	DIODE		1
D6	2013883	DIODE		1
IC1	2029562	GATE ARRAY/ASIC	QFP, 144	1
IC10	2031702	EP-ROM	DIP, 4 MBIT, 32	1
IC11	X422350329	TTL-IC	QUAD 2-INPUT PO. OR	1
IC12	2025169	HIC		1
IC15	2023625	RESET IC		1
IC2	2026807	MICRO CONTROLLER		1
IC3	2026132	PSRAM	SOP, 1MBIT, 70N/SEC, 32	1
IC5	X630113230	IC SOCKET	32 PIN	1