

PIXMA iP5000

PARTS CATALOG

REVISION 0

| | |
|------------|-------------------|
| 9615A001AA | 120V(US) |
| 9615A002AA | 120V(CA) |
| 9615A005AA | 220V-240V(EUR) |
| 9615A008AA | 220V-240V(USA/MT) |
| 9615A009AA | 220V-240V(AU) |
| 9615A010AA | 220V-240V(BR) |
| 9615A011AA | 220V-240V(GB) |
| 9615A013AA | 120V(TW) |
| 9615A014AA | 220V-240V(HK) |
| 9615A015AA | 220V-240V(CN) |
| 9615A017AA | 220V-240V(EUM) |

www.druckparts.pl

Canon

SEPT. 2004

QY8-31C5-000

COPYRIGHT © 2004 CANON INC. CANON PIXMA iP5000 0904 N 0.00-0

Application

This manual has been issued by Canon Inc. for qualified person to learn technical theory, installation, maintenance, and repair of products. This manual covers all localities where the products are sold. For this reason, there may be information in this manual that does not apply to your locality.

Corrections

This manual could include technical inaccuracies or typographical errors due to improvements or changes in the products. When changes occur in applicable products or in the content of this manual, Canon will release technical information as the need arises. In the event of major changes in the contents of this manual over a long or short period. Canon will issue a new editions of this manual. The following paragraph does not apply to any countries where such provisions are inconsistent with local law.

Trademarks

The product names and company names described in this manual are the registered trademarks of the individual companies.

Copyright

This manual is copyrighted with all rights reserved. Under the copyright laws, this manual may not be copied, reproduced or translated into another language, in whole or in part, without the written consent of Canon Inc.

Copyright © 2004 by Canon Inc.

CANON INC.

Inkjet SFP Quality Assurance Div.

16-1, Shimonoge 3-chome, Takatsu-ku, Kawasaki-shi, Kanagawa 213-8512, Japan

This manual was created under Microsoft® Windows® 2000.

Parts layout pictures were edited using Adobe® Photoshop® 7.0. KEY No. were created using Adobe® Illustrator® 10.

HTML files were created using Microsoft® FrontPage® 2000.

www.drukparts.pl

ABOUT THIS MANUAL

A. ILLUSTRATION INDEX

For illustration index, the parts layout illustrations in this parts catalog are listed in abbreviated form in order of illustration number to identify the pages they appear on. To find an illustration of a part, see the ILLUSTRATION INDEX.

B. PARTS LAYOUT & PARTS LIST

Parts layout illustration

a) Parts search

Find a part from the parts layout illustration and find its key number from the parts list to identify the part number and name. For screws, nuts, washers, lock washers, pins, spacers, see SCREWS & WASHERS LIST.

Note: If parts have the same or similar shape but different specifications, their key number is assigned to several part numbers and names in the parts list.

b) Parts replacement procedure

To replace parts, the parts layout illustrations have figure numbers according to the disassembly procedure of the product. The parts that require careful work are shown in the illustration.

Parts list

a) FIGURE & KEY No.

The FIGURE & KEY No. column corresponds to the key numbers assigned to the parts in the parts layout illustration.

b) PART NUMBER

The PART NUMBER column gives the part numbers corresponding to the key numbers. To order a part, indicate the part number clearly.

Note: Parts marked NPN are not service parts.

c) RANK

The service parts with N in the RANK column are order parts.

d) QTY

The QTY column gives the number of parts in the corresponding components layout illustration.

e) DESCRIPTION

The DESCRIPTION column gives the part names in English.

To order a part, indicate the part name, too.

C. OPTIONS & CONSUMABLES

These are illustrations and a list of parts that can be used as optional consumable equipments.

D. SCREWS & WASHERS LIST

This is a list of screws, nuts, washers, lock washers, pins, and spacers.

The QTY column does not give the number of parts used.

E. TOOL LIST

This is a list of tools used for servicing products.

F. NUMERICAL INDEX

All the parts listed in this parts catalog are arranged in order of part number. You can identify part locations and names from the NUMERICAL INDEX.

Contents

A. ILLUSTRATION INDEX ▶

B. PARTS LAYOUT & PARTS LIST

[FIGURE 1 PRINTER & CASSETTE & PRINT HEAD](#)

[FIGURE 2 AC ADAPTER](#)

[FIGURE 3 OPERATION PANEL UNIT & MAIN CASE UNIT](#)

[FIGURE 4 BOTTOM CASE UNIT](#)

[FIGURE 5 LOGIC BOARD ASS'Y](#)

[FIGURE 6 SHEET FEED UNIT](#)

[FIGURE 7 INK ABSORBER](#)

[FIGURE 8 CARRIAGE UNIT](#)

[FIGURE 9 PURGE UNIT](#)

[FIGURE 10 PLATEN UNIT](#)

[FIGURE 11 PAPER FEED & CARRIAGE LIFT PART](#)

C. OPTION & CONSUMABLES ▶

D. SCREW & WASHER LIST ▶

E. TOOL ▶

F. NUMERICAL INDEX ▶

www.drukparts.pl

A. ILLUSTRATION INDEX

Contents

| | |
|---|--|
| <p>FIGURE 1 PRINTER & CASSETTE & PRINT HEAD</p> | <p>FIGURE 2 AC ADAPTER</p> |
|  |  |
| <p>FIGURE 3 OPERATION PANEL UNIT & MAIN CASE UNIT</p> | <p>FIGURE 4 BOTTOM CASE UNIT</p> |
|  |  |
| <p>FIGURE 5 LOGIC BOARD ASS'Y</p> | <p>FIGURE 6 SHEET FEED UNIT</p> |
|  |  |

FIGURE 7 INK ABSORBER

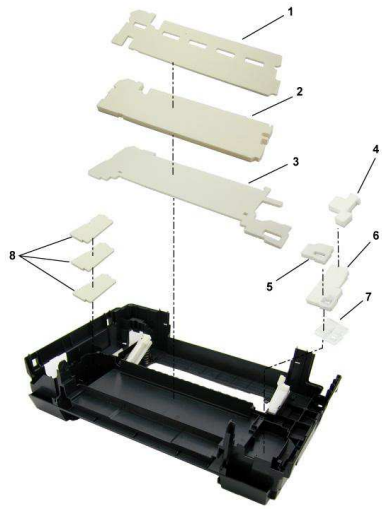


FIGURE 8 CARRIAGE UNIT

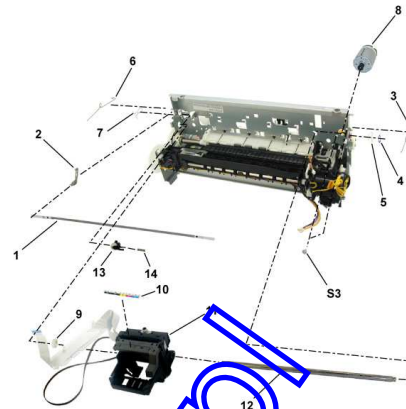


FIGURE 9 PURGE UNIT

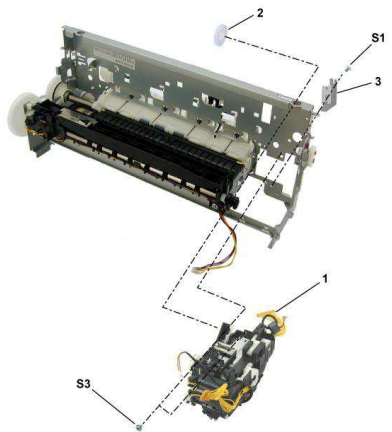


FIGURE 10 PLATEN UNIT

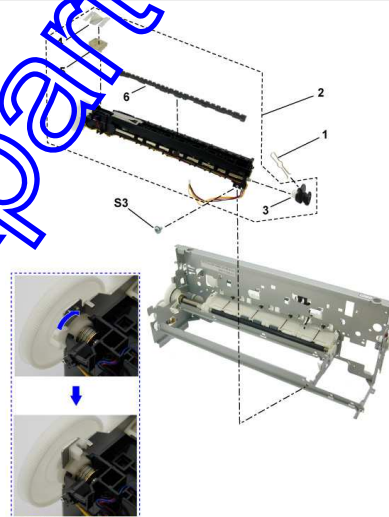


FIGURE 11 PAPER FEED & CARRIAGE LIFT PART

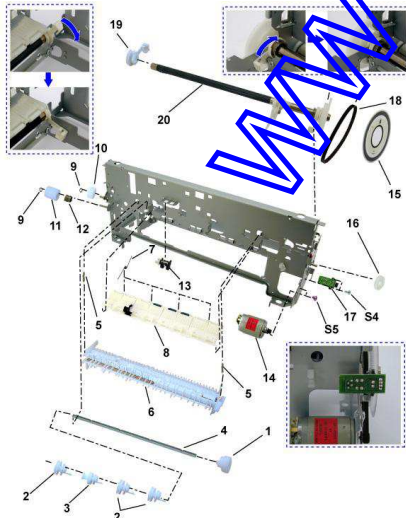


FIGURE 12 OPTION & CONSUMABLES



FIGURE 13 TOOL



www.drukparts.pl



FIGURE 1 PRINTER & CASSETTE & PRINT HEAD



| FIGURE & KEY No. | | PART NUMBER | RANK | QTY | DESCRIPTION | REMARKS |
|------------------|---|--------------|------|-----|-----------------|-------------------|
| 1 - | 1 | QM2-1630-000 | | 1 | CASSETTE UNIT | |
| | 2 | QC1-4286-000 | | 1 | COVER, CASSETTE | |
| | 3 | QL2-0605-000 | | 1 | CDR TRAY ASS'Y | W/ CDR PRINTING |
| | 4 | QA4-1117-000 | | 1 | TRAY, CD SUB | W/ CDR PRINTING |
| | 5 | QH2-2725-000 | | 1 | CORD, POWER | 100V-120V |
| | | QH2-2726-000 | | 1 | CORD, POWER | 220V-240V |
| | | QH2-2727-000 | | 1 | CORD, POWER | 220V-240V(AU) |
| | | WT3-5156-000 | | 1 | CORD, POWER | 220V-240V(GB, HK) |
| | | WT3-5160-000 | | 1 | CORD, POWER | 220V-240V(KR) |
| | | WT3-5182-000 | | 1 | CORD, POWER | 220V-240V(CHN) |
| | 6 | QY6-0057-000 | | 1 | PRINT HEAD | |

www.drukparts.pl

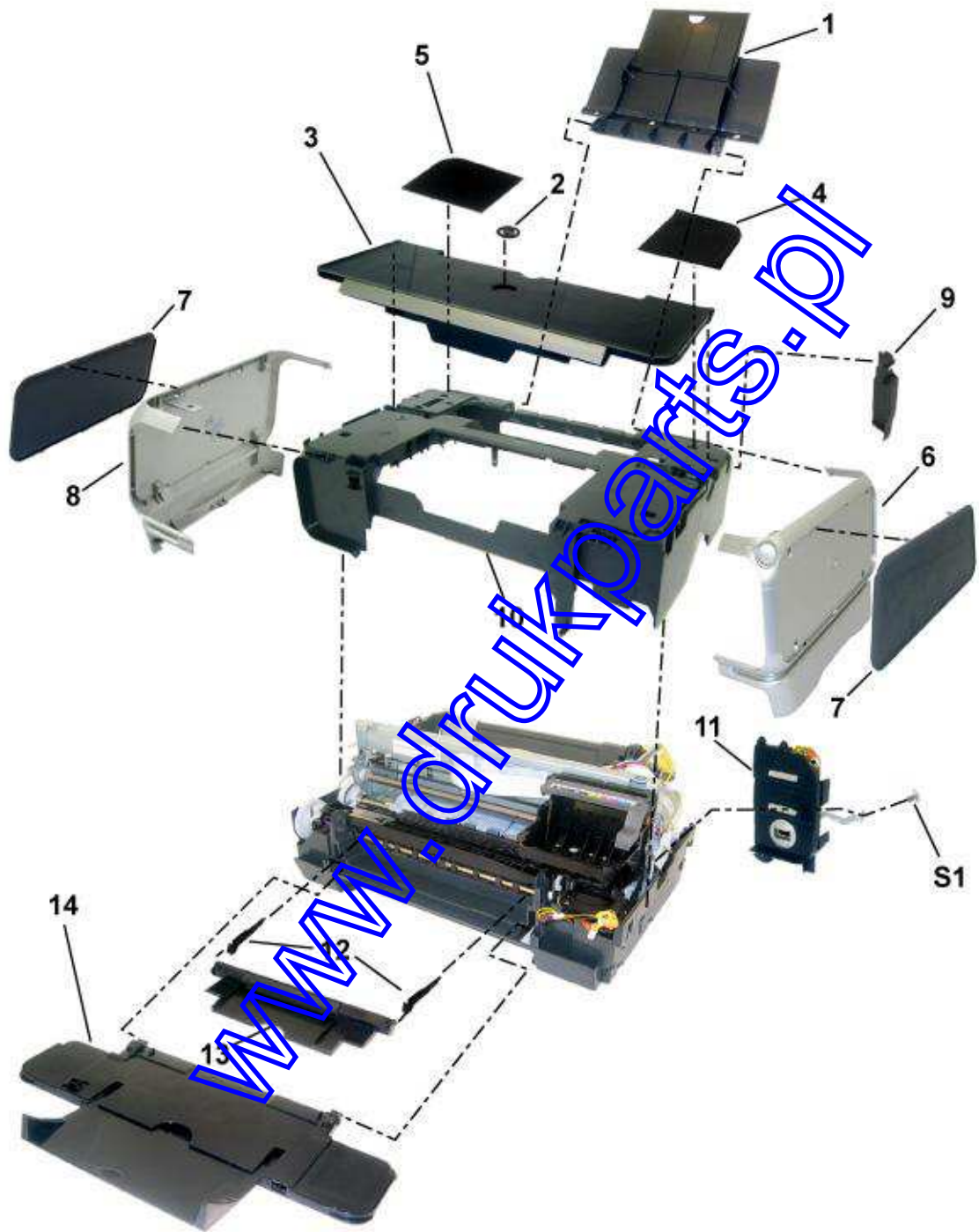
FIGURE 2 AC ADAPTER



| FIGURE & KEY No. | | PART NUMBER | RANK | QTY | DESCRIPTION | REMARKS |
|------------------|---|--------------|------|-----|-------------------------------|---------|
| 2 - | 1 | QK1-1068-000 | | 1 | AC ADAPTER: 100V-120V 50/60HZ | |
| | | QK1-1070-000 | | 1 | AC ADAPTER: 220V-240V 50/60HZ | |
| | 2 | QC1-5489-000 | | 1 | COVER, PAPER FEED GUIDE | |

www.drukparts.pl

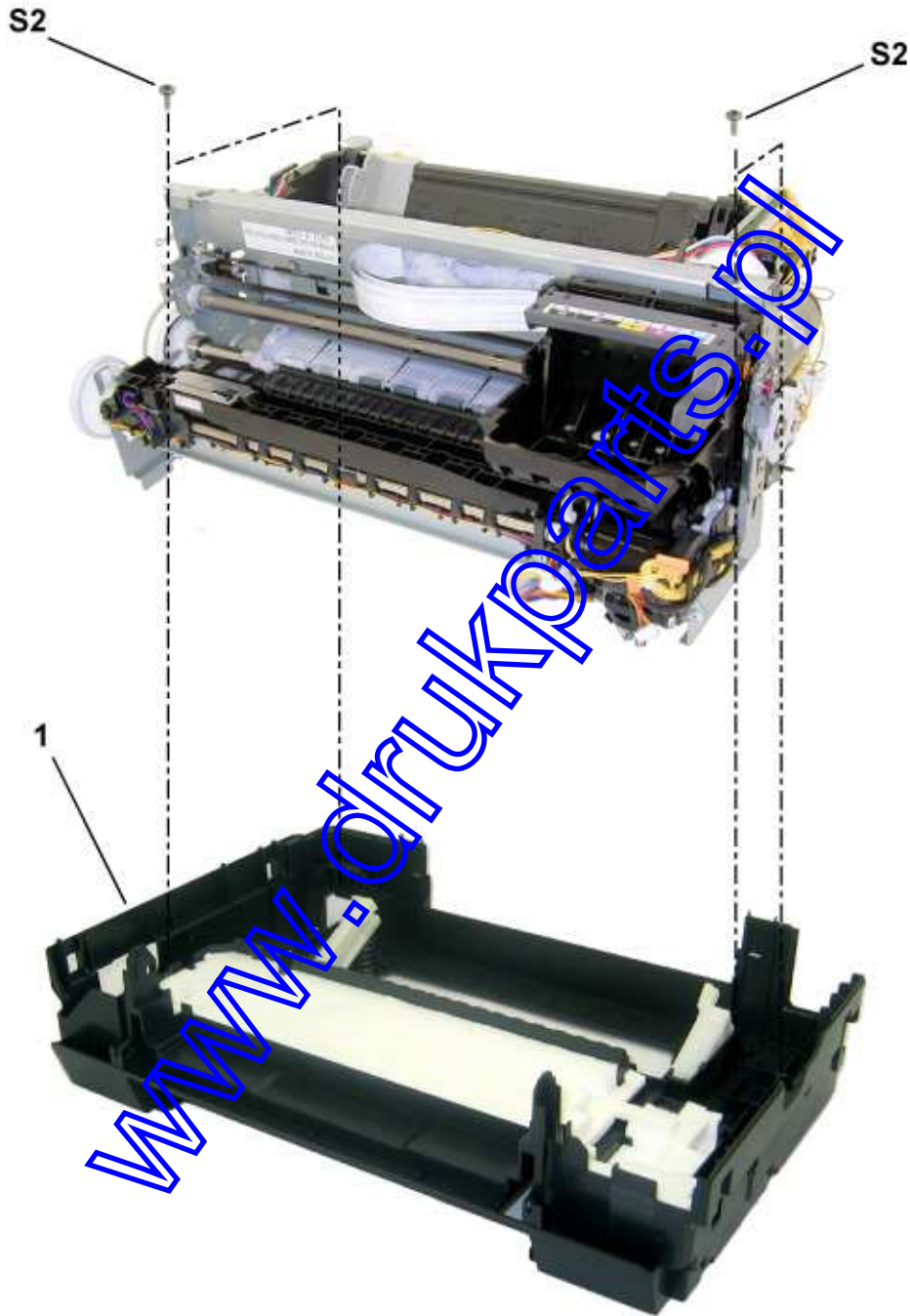
FIGURE 3 OPERATION PANEL UNIT & MAIN CASE UNIT



| FIGURE & KEY No. | | PART NUMBER | RANK | QTY | DESCRIPTION | REMARKS |
|------------------|----|--------------|------|-----|------------------------|------------------|
| 3 - | 1 | QM2-1625-000 | | 1 | PAPER SUPPORT UNIT | |
| | 2 | QC1-4261-000 | | 1 | EMBLEM, PIXMA | |
| | 3 | QM2-1634-000 | | 1 | ACCESS COVER UNIT | |
| | 4 | QC1-5479-000 | | 1 | COVER, MAIN CASE R | |
| | 5 | QC1-5480-000 | | 1 | COVER, MAIN CASE L | |
| | 6 | QM2-1231-000 | | 1 | SIDE COVER BASE R UNIT | |
| | 7 | QC1-5483-000 | | 2 | COVER, SIDE | |
| | 8 | QC1-4230-000 | | 1 | BASE, SIDE COVER L | |
| | 9 | QC1-5494-000 | | 1 | COVER, I/F | |
| | 10 | QM2-1622-000 | | 1 | MAIN CASE UNIT | |
| | 11 | QM2-1626-000 | | 1 | OPERATION PANEL UNIT | |
| | 12 | QC1-4252-000 | | 2 | ARM, RELEASE | |
| | 13 | QM2-1621-000 | | 1 | CDR TRAY BASE UNIT | W/ CDR PRINTING |
| | | QM2-2036-000 | | 1 | INNER COVER UNIT | W/O CDR PRINTING |
| | 14 | QM2-1629-000 | | 1 | FRONT DOOR UNIT | |

www.drukparts.pl

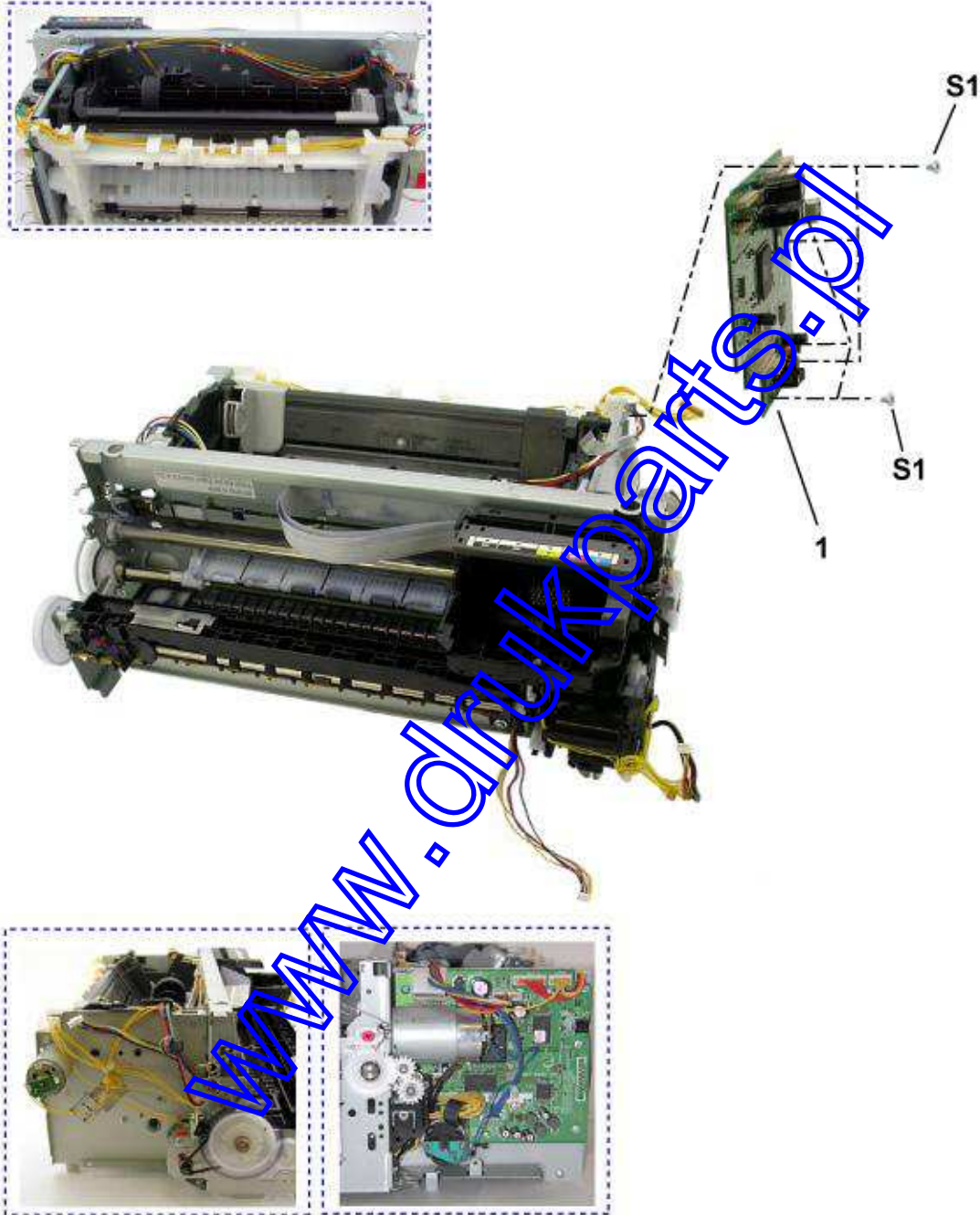
FIGURE 4 BOTTOM CASE UNIT



| FIGURE & KEY No. | | PART NUMBER | RANK | QTY | DESCRIPTION | REMARKS |
|------------------|---|--------------|------|-----|------------------|---------|
| 4 - | 1 | QM2-1628-000 | | 1 | BOTTOM CASE UNIT | |

www.drukparts.pl

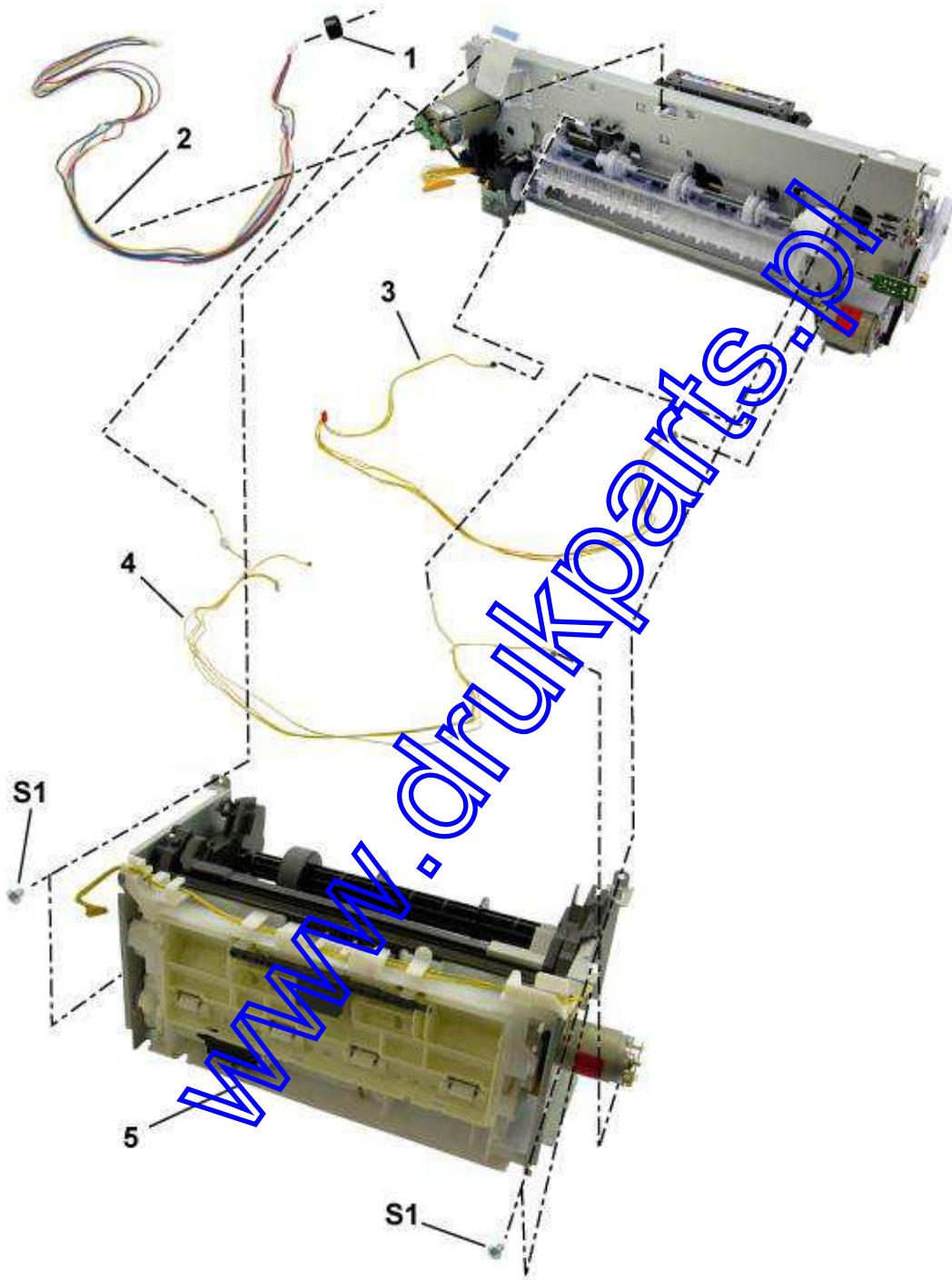
FIGURE 5 LOGIC BOARD ASS'Y



| FIGURE & KEY No. | | PART NUMBER | RANK | QTY | DESCRIPTION | REMARKS |
|------------------|---|--------------|------|-----|-------------------|---------|
| 5 - | 1 | QM2-1853-000 | | 1 | LOGIC BOARD ASS'Y | |

www.drukparts.pl

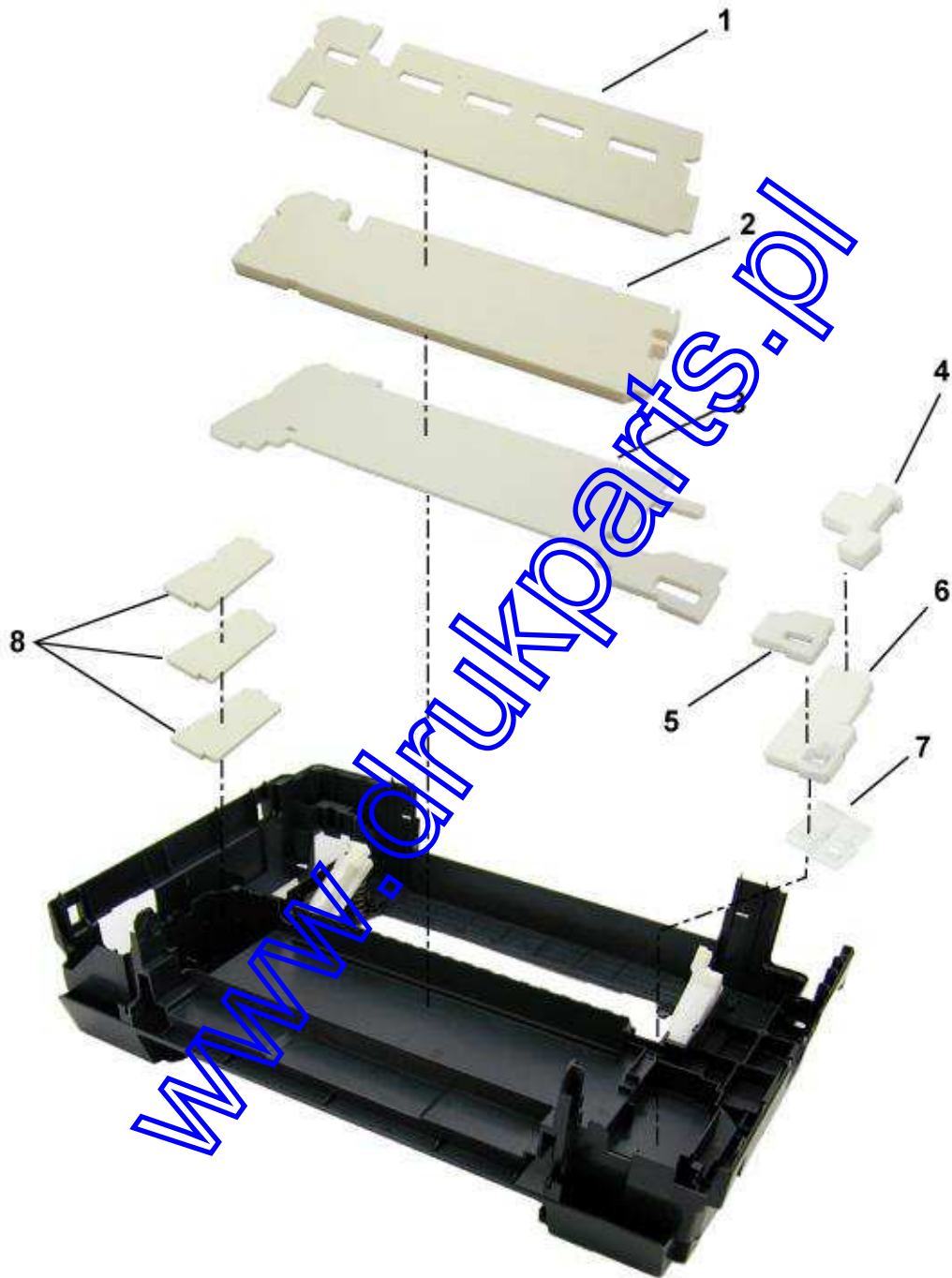
FIGURE 6 SHEET FEED UNIT



| FIGURE & KEY No. | | PART NUMBER | RANK | QTY | DESCRIPTION | REMARKS |
|------------------|---|--------------|------|-----|----------------------------|---------|
| 6 - | 1 | WE8-6031-000 | | 1 | CORE, RING | |
| | 2 | QM2-1857-000 | | 1 | DC CONNECTOR ASS'Y | |
| | 3 | QM2-1557-000 | | 1 | SENSOR MULTI HARNESS ASS'Y | |
| | 4 | QM2-1554-000 | | 1 | MOTOR MULTI HARNESS ASS'Y | |
| | 5 | QM2-1220-000 | | 1 | SHEET FEED UNIT | |

www.drukparts.pl

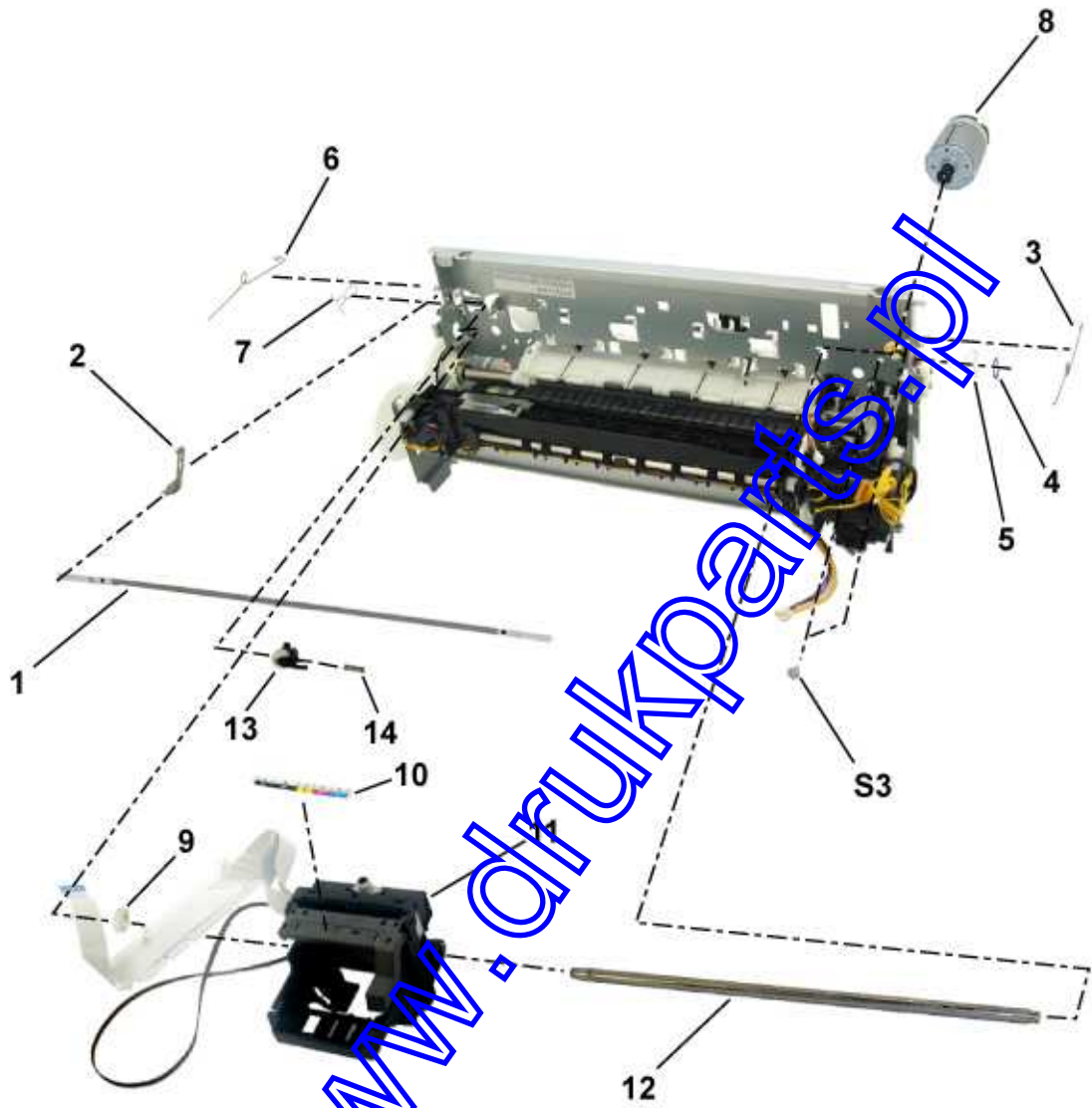
FIGURE 7 INK ABSORBER



| FIGURE & KEY No. | | PART NUMBER | RANK | QTY | DESCRIPTION | REMARKS |
|------------------|---|--------------|------|-----|---------------|---------|
| 7 - | 1 | QC1-4221-000 | | 1 | ABSORBER, INK | |
| | 2 | QC1-4864-000 | | 1 | ABSORBER, INK | |
| | 3 | QC1-4222-000 | | 1 | ABSORBER, INK | |
| | 4 | QC1-4263-000 | | 1 | ABSORBER, INK | |
| | 5 | QC1-4223-000 | | 1 | ABSORBER, INK | |
| | 6 | QC1-4224-000 | | 1 | ABSORBER, INK | |
| | 7 | QC1-4264-000 | | 1 | ABSORBER, INK | |
| | 8 | QC1-4257-000 | | 3 | ABSORBER, INK | |

www.drukparts.pl

FIGURE 8 CARRIAGE UNIT

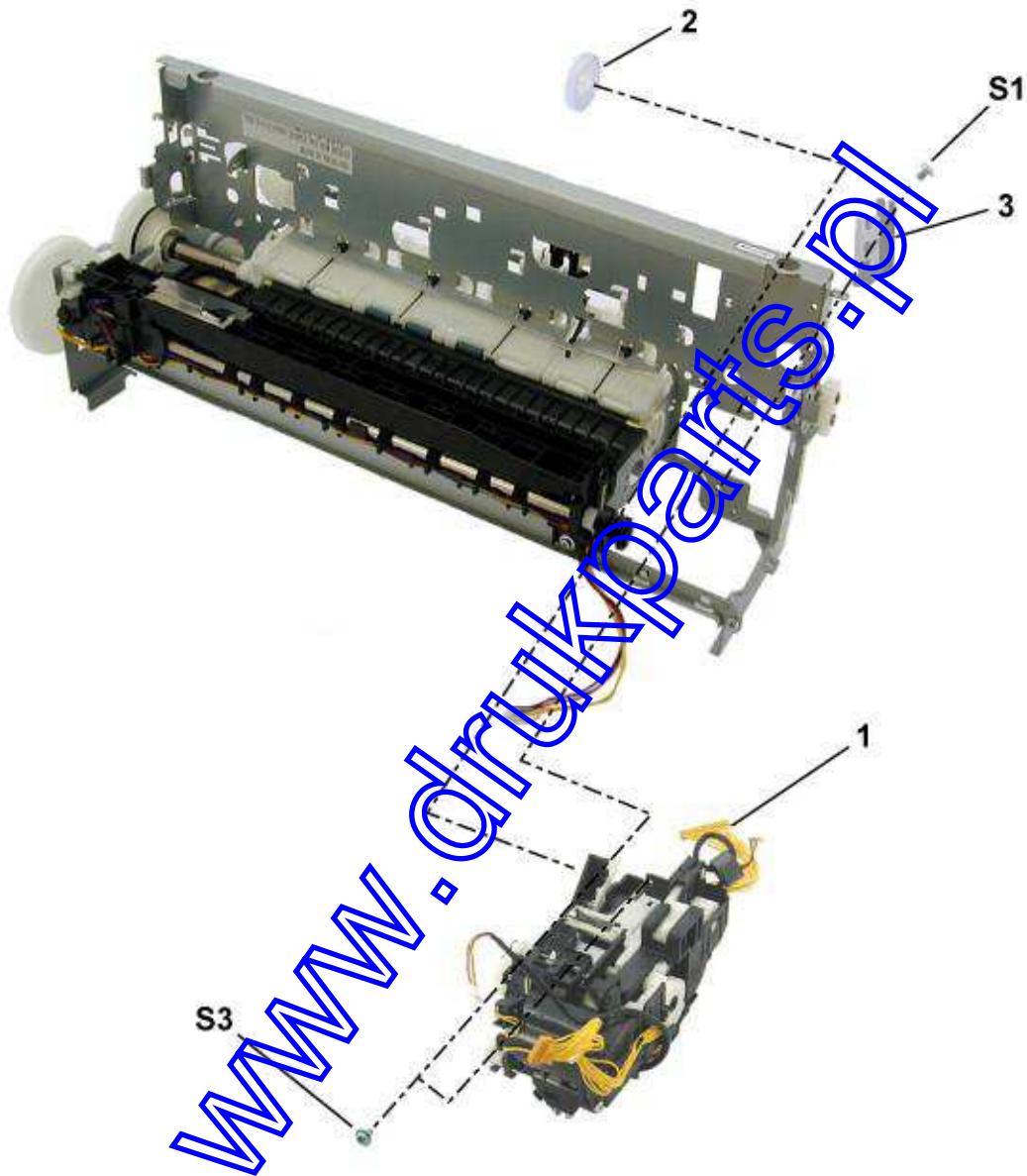


www.drukparts.nl

| FIGURE & KEY No. | | PART NUMBER | RANK | QTY | DESCRIPTION | REMARKS |
|------------------|----|--------------|------|-----|-------------------------|---------|
| 8 - | 1 | QC1-4284-000 | | 1 | FILM, TIMING SLIT STRIP | |
| | 2 | QA4-0990-000 | | 1 | SPRING, LEAF | |
| | 3 | QC1-4280-000 | | 1 | CLIP, SHAFT R | |
| | 4 | QC1-2289-000 | | 1 | RING, CARRIAGE SHAFT | |
| | 5 | QC1-4282-000 | | 1 | CAM, CARRIAGE SHAFT R | |
| | 6 | QC1-4279-000 | | 1 | CLIP, SHAFT L | |
| | 7 | QC1-2510-000 | | 1 | CLIP, CARRIAGE SHAFT | |
| | 8 | QK1-0545-000 | | 1 | MOTOR, CARRIAGE | |
| | 9 | QC1-4281-000 | | 1 | CAM, CARRIAGE SHAFT L | |
| | 10 | QC1-4283-000 | | 1 | LABEL, TANK | |
| | 11 | QM2-1998-000 | | 1 | CARRIAGE UNIT | |
| | 12 | QC1-5745-000 | N | 1 | SHAFT, CARRIAGE | |
| | 13 | QL2-0597-000 | | 1 | IDLER PULLEY ASS'Y | |
| | 14 | QC1-2290-000 | | 1 | SPRING, COIL | |

www.drukparts.pl

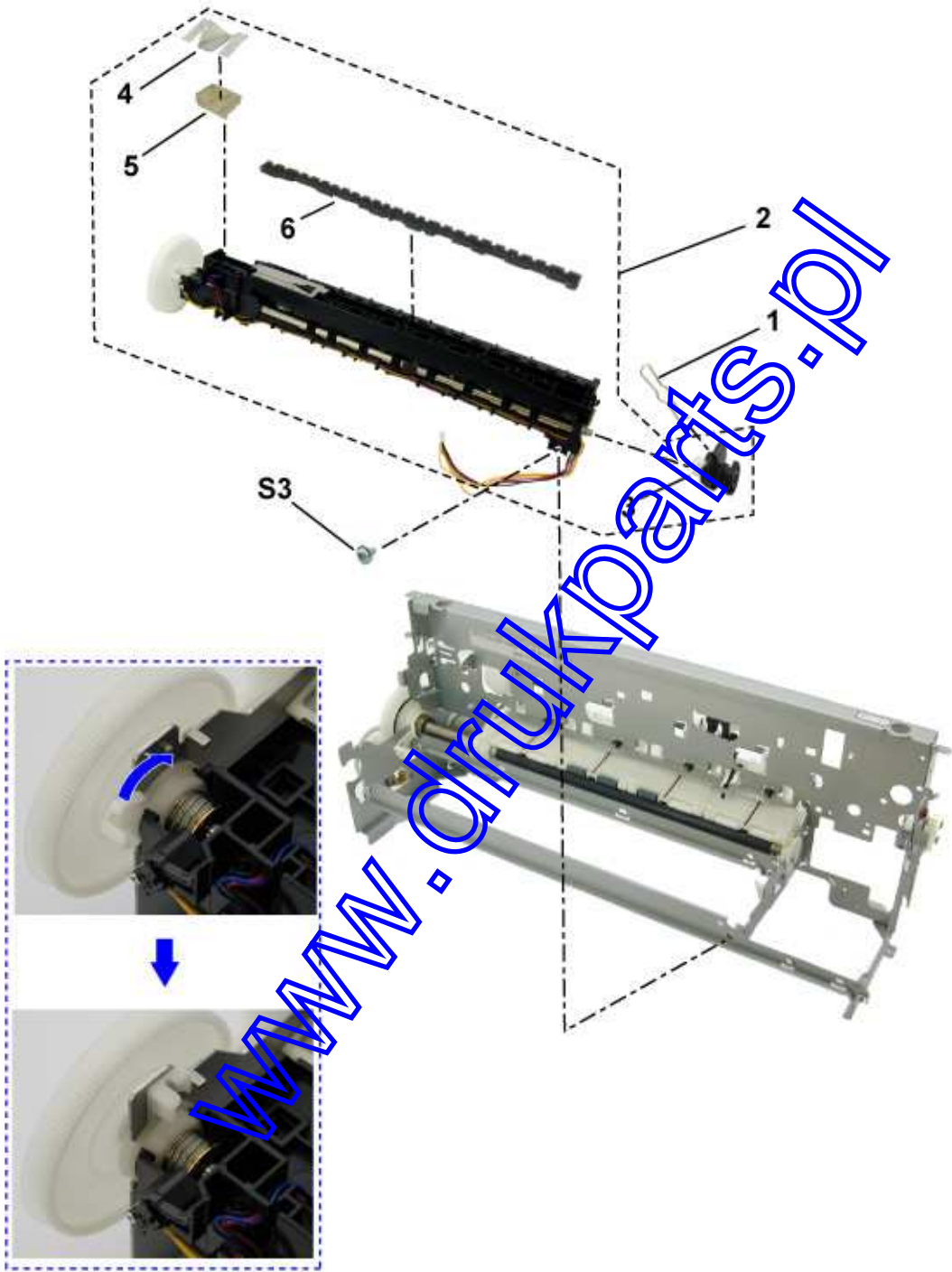
FIGURE 9 PURGE UNIT



| FIGURE & KEY No. | | PART NUMBER | RANK | QTY | DESCRIPTION | REMARKS |
|------------------|---|--------------|------|-----|--------------------|---------|
| 9 - | 1 | QM2-1210-000 | | 1 | PURGE UNIT | |
| | 2 | QC1-4390-000 | | 1 | GEAR, TRANSMISSION | |
| | 3 | QC1-4875-000 | N | 1 | PLATE, PURGE | |

www.drukparts.pl

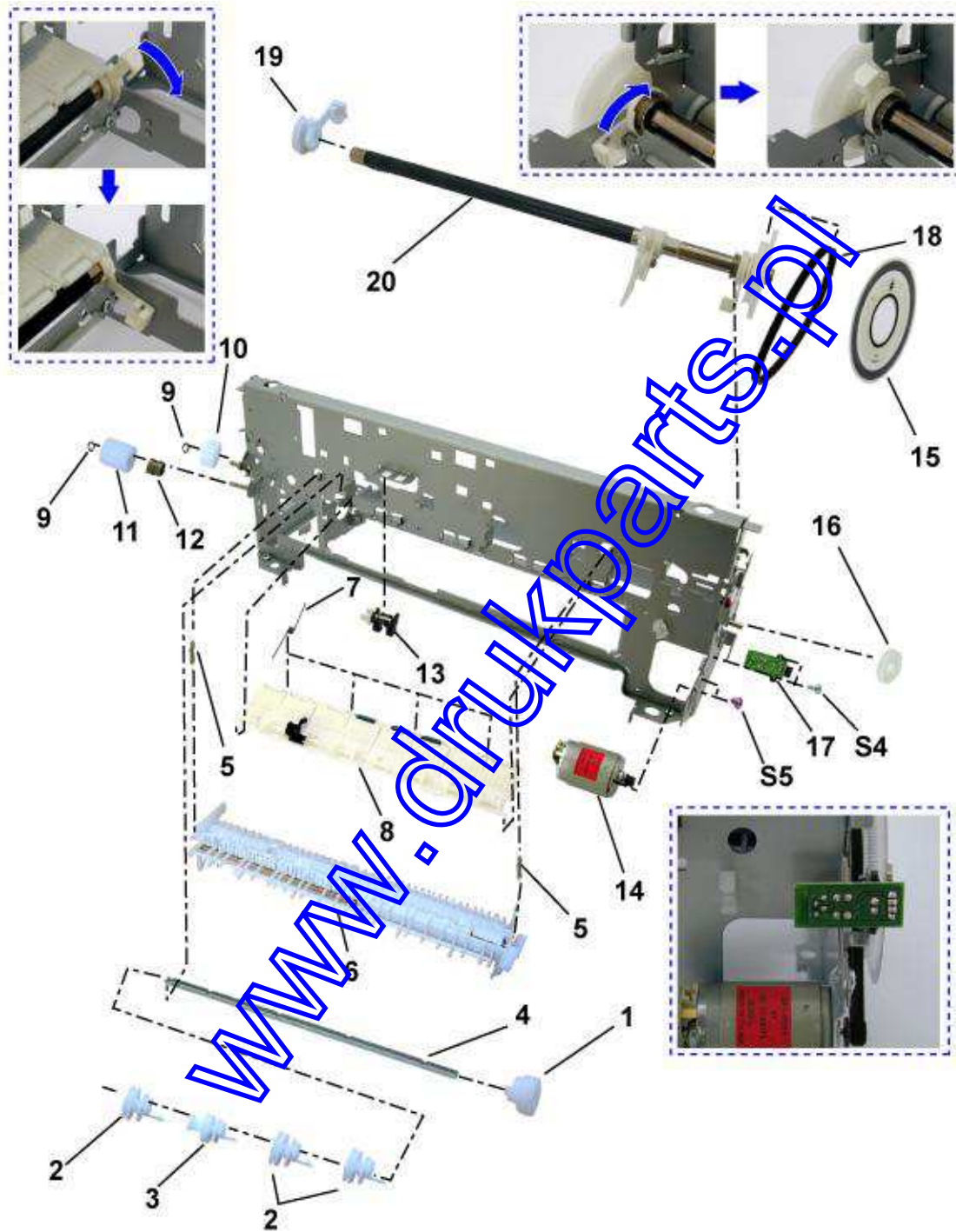
FIGURE 10 PLATEN UNIT



| FIGURE & KEY No. | | PART NUMBER | RANK | QTY | DESCRIPTION | REMARKS |
|------------------|---|--------------|------|-----|---------------------|---------|
| 10 - | 1 | QC1-5850-000 | | 1 | SPRING, VALVE CAM | |
| | 2 | QM2-1215-000 | | 1 | PLATEN UNIT | |
| | 3 | QC1-4376-000 | | 1 | CAM, VALVE | |
| | 4 | QC1-5837-000 | | 1 | SHEET, INK ABSORBER | |
| | 5 | QC1-4867-000 | | 1 | ABSORBER, INK | |
| | 6 | QC1-4368-000 | | 1 | ABSORBER, INK | |

www.drukparts.pl

FIGURE 11 PAPER FEED & CARRIAGE LIFT PART



| FIGURE & KEY No. | | PART NUMBER | RANK | QTY | DESCRIPTION | REMARKS |
|------------------|----|--------------|------|-----|------------------------------|---------|
| 11 - | 1 | QC1-4333-000 | | 1 | GEAR, LIFT SHAFT | |
| | 2 | QC1-4332-000 | | 3 | CAM, LIFT SHAFT | |
| | 3 | QC1-4837-000 | | 1 | CAM, PAPER END RELEASE | |
| | 4 | QC1-4331-000 | N | 1 | SHAFT, LIFT | |
| | 5 | QU1-2098-000 | | 2 | SPRING, HOOK END COIL | |
| | 6 | QM2-1226-000 | | 1 | PAPER GUIDE UNIT | |
| | 7 | QC1-4346-000 | | 4 | SPRING, TORSION | |
| | 8 | QM2-1235-000 | | 1 | PRESSURE ROLLER ASS'Y | |
| | 9 | QC1-4391-000 | | 2 | RING, LIFT TRANSMISSION GEAR | |
| | 10 | QC1-4327-000 | | 1 | GEAR, LIFT TRANSMISSION | |
| | 11 | QC1-4328-000 | | 1 | GEAR, LIFT TRANSMISSION | |
| | 12 | QC1-4329-000 | | 1 | SPRING, COIL | |
| | 13 | WG8-5624-000 | | 1 | IC, PHOTO INTERRUPTER | |
| | 14 | QK1-0550-000 | | 1 | MOTOR, PAPER FEED | |
| | 15 | QC1-4833-000 | | 1 | FILM, TIMING SLIT DISK | |
| | 16 | QC1-4340-000 | | 1 | GEAR, EJECT | |
| | 17 | QM2-1213-000 | | 1 | TIMING SENSOR UNIT | |
| | 18 | QC1-4836-000 | | 1 | BELT, PAPER FEED | |
| | 19 | QC1-4351-000 | | 1 | BUSHING | |
| | 20 | QL2-0598-000 | | 1 | FEED ROLLER ASS'Y | |

www.druckparts.pl

FIGURE 12 OPTION & CONSUMABLES



| FIGURE & KEY No. | | PART NUMBER | RANK | QTY | DESCRIPTION | REMARKS |
|------------------|---|-------------|------|-----|-------------------------|-------------|
| 12 - | 1 | NPN | | 1 | BLACK INK TANK BCI-3eBK | CONSUMABLES |
| | | NPN | | 1 | BLACK INK TANK BCI-6BK | CONSUMABLES |
| | | NPN | | 1 | CYAN INK TANK BCI-6C | CONSUMABLES |
| | | NPN | | 1 | MAGENTA INK TANK BCI-6M | CONSUMABLES |
| | | NPN | | 1 | YELLOW INK TANK BCI-6Y | CONSUMABLES |

www.drukparts.pl

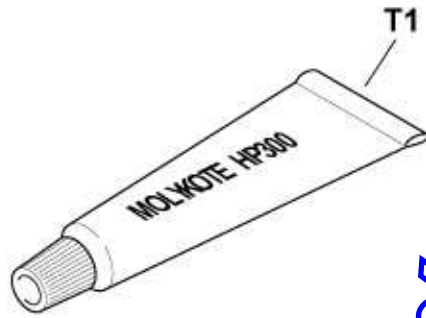
D. SCREW & WASHER LIST

[Contents](#)

| FIGURE & KEY No. | | PART NUMBER | RANK | QTY | DESCRIPTION | REMARKS |
|------------------|---|--------------|------|-----|-----------------------------------|---------|
| S - | 1 | XB1-2300-405 | | | SCREW, MACH.BH, M3X4 | |
| | 2 | XA9-1258-000 | | | SCREW, TAP, WASHER HEAD, M3X12 | |
| | 3 | XB6-7300-605 | | | SCREW, MACHINE, WASHER HEAD, M3x6 | |
| | 4 | XB1-2200-505 | | | SCREW, MACH, TRUSS HEAD, M2X5 | |
| | 5 | XA9-1437-000 | | | SCREW, BIND, M2.6X4(REDF) | |

www.drukparts.pl

FIGURE 13 TOOL



www.drukparts.pl

| FIGURE & KEY No. | | PART NUMBER | RANK | QTY | DESCRIPTION | REMARKS |
|------------------|---|--------------|------|-----|-------------------------|---------|
| T - | 1 | QY9-0035-000 | | 1 | GREASE, MOLYKOTE HP300 | |
| | 2 | QY9-0057-000 | | 1 | LUBE, FLOIL KG107A, OIL | |

www.drukparts.pl

F. NUMERICAL INDEX

Contents

| PART NUMBER | FIGURE & KEY No. | | DESCRIPTION |
|------------------------------|------------------|----|------------------------------|
| QA4-0990-000 | 8 - | 2 | SPRING, LEAF |
| QA4-1117-000 | 1 - | 4 | TRAY, CD SUB |
| QC1-2289-000 | 8 - | 4 | RING, CARRIAGE SHAFT |
| QC1-2290-000 | 8 - | 14 | SPRING, COIL |
| QC1-2510-000 | 8 - | 7 | CLIP, CARRIAGE SHAFT |
| QC1-4221-000 | 7 - | 1 | ABSORBER, INK |
| QC1-4222-000 | 7 - | 3 | ABSORBER, INK |
| QC1-4223-000 | 7 - | 5 | ABSORBER, INK |
| QC1-4224-000 | 7 - | 6 | ABSORBER, INK |
| QC1-4230-000 | 3 - | 8 | BASE, SIDE COVER L |
| QC1-4252-000 | 3 - | 12 | ARM, RELEASE |
| QC1-4257-000 | 7 - | 8 | ABSORBER, INK |
| QC1-4261-000 | 3 - | 2 | EMBLEM, PIXMA |
| QC1-4263-000 | 7 - | 4 | ABSORBER, INK |
| QC1-4264-000 | 7 - | 7 | ABSORBER, INK |
| QC1-4279-000 | 8 - | 6 | CLIP, SHAFT L |
| QC1-4280-000 | 8 - | 3 | CLIP, SHAFT R |
| QC1-4281-000 | 8 - | 9 | CAM, CARRIAGE SHAFT L |
| QC1-4282-000 | 8 - | 5 | CAM, CARRIAGE SHAFT R |
| QC1-4283-000 | 8 - | 10 | LABEL, TANK |
| QC1-4284-000 | 8 - | 1 | FILM, TIMING SLIT STRIP |
| QC1-4286-000 | 1 - | 2 | COVER, CASSETTE |
| QC1-4327-000 | 11 - | 10 | GEAR, LIFT TRANSMISSIO |
| QC1-4328-000 | 11 - | 11 | GEAR, LIFT TRANSMISSION |
| QC1-4329-000 | 11 - | 12 | SPRING, COIL |
| QC1-4331-000 | 11 - | 4 | SHAFT, LIFT |
| QC1-4332-000 | 11 - | 2 | CAM, LIFT SHAFT |
| QC1-4333-000 | 11 - | 1 | GEAR, LIFT SHAFT |
| QC1-4340-000 | 11 - | 16 | GEAR, EJECT |
| QC1-4346-000 | 11 - | 7 | SPRING, TORSION |
| QC1-4351-000 | 11 - | 19 | BUSHING |
| QC1-4368-000 | 10 - | 6 | ABSORBER, INK |
| QC1-4376-000 | 10 - | 3 | CAM, VALVE |
| QC1-4390-000 | 9 - | 2 | GEAR, TRANSMISSION |
| QC1-4391-000 | 11 - | 9 | RING, LIFT TRANSMISSION GEAR |
| QC1-4833-000 | 11 - | 15 | FILM, TIMING SLIT DISK |
| QC1-4836-000 | 11 - | 18 | BELT, PAPER FEED |
| QC1-4837-000 | 11 - | 3 | CAM, PAPER END RELEASE |
| QC1-4864-000 | 7 - | 2 | ABSORBER, INK |
| QC1-4867-000 | 10 - | 5 | ABSORBER, INK |
| QC1-4875-000 | 9 - | 3 | PLATE, PURGE |
| QC1-5479-000 | 3 - | 4 | COVER, MAIN CASE R |
| QC1-5480-000 | 3 - | 5 | COVER, MAIN CASE L |
| QC1-5483-000 | 3 - | 7 | COVER, SIDE |

| PART NUMBER | FIGURE & KEY No. | | DESCRIPTION |
|------------------------------|------------------|----|-------------------------------|
| QC1-5489-000 | 2 - | 2 | COVER, PAPER FEED GUIDE |
| QC1-5494-000 | 3 - | 9 | COVER, I/F |
| QC1-5745-000 | 8 - | 12 | SHAFT, CARRIAGE |
| QC1-5837-000 | 10 - | 4 | SHEET, INK ABSORBER |
| QC1-5850-000 | 10 - | 1 | SPRING, VALVE CAM |
| QH2-2725-000 | 1 - | 5 | CORD, POWER |
| QH2-2726-000 | 1 - | 5 | CORD, POWER |
| QH2-2727-000 | 1 - | 5 | CORD, POWER |
| QK1-0545-000 | 8 - | 8 | MOTOR, CARRIAGE |
| QK1-0550-000 | 11 - | 14 | MOTOR, PAPER FEED |
| QK1-1068-000 | 2 - | 1 | AC ADAPTER: 100V-120V 50/60HZ |
| QK1-1070-000 | 2 - | 1 | AC ADAPTER: 220V-240V 50/60HZ |
| QL2-0597-000 | 8 - | 13 | IDLER PULLEY ASS'Y |
| QL2-0598-000 | 11 - | 20 | FEED ROLLER ASS'Y |
| QL2-0605-000 | 1 - | 3 | CDR TRAY ASS'Y |
| QM2-1210-000 | 9 - | 1 | PURGE UNIT |
| QM2-1213-000 | 11 - | 17 | TIMING SENSOR UNIT |
| QM2-1215-000 | 10 - | 2 | PLATEN UNIT |
| QM2-1220-000 | 6 - | 5 | SHEET FEED UNIT |
| QM2-1226-000 | 11 - | 6 | PAPER GUIDE UNIT |
| QM2-1231-000 | 3 - | 6 | SIDE COVER BASE R UNIT |
| QM2-1235-000 | 11 - | 8 | PRESSURE ROLLER ASS'Y |
| QM2-1554-000 | 6 - | 4 | MOTOR MULTI HARNESS ASS'Y |
| QM2-1557-000 | 6 - | 3 | SENSOR MULTI HARNESS ASS'Y |
| QM2-1621-000 | 3 - | 13 | CDR TRAY BASE UNIT |
| QM2-1622-000 | 3 - | 10 | MAIN CASE UNIT |
| QM2-1625-000 | 3 - | 1 | PAPER SUPPORT UNIT |
| QM2-1626-000 | 3 - | 11 | OPERATION PANEL UNIT |
| QM2-1628-000 | 4 - | 1 | BOTTOM CASE UNIT |
| QM2-1629-000 | 3 - | 14 | FRONT DOOR UNIT |
| QM2-1630-000 | 1 - | 1 | CASSETTE UNIT |
| QM2-1634-000 | 3 - | 3 | ACCESS COVER UNIT |
| QM2-1853-000 | 5 - | 1 | LOGIC BOARD ASS'Y |
| QM2-1857-000 | 6 - | 2 | DC CONNECTOR ASS'Y |
| QM2-1998-000 | 8 - | 11 | CARRIAGE UNIT |
| QM2-2036-000 | 3 - | 13 | INNER COVER UNIT |
| QU1-2098-000 | 11 - | 5 | SPRING, HOOK END COIL |
| QY6-0057-000 | 1 - | 6 | PRINT HEAD |
| QY9-0035-000 | T - | 1 | GREASE, MOLYKOTE HP300 |
| QY9-0057-000 | T - | 2 | LUBE, FLOIL KG107A, OIL |
| WE8-6031-000 | 6 - | 1 | CORE, RING |
| WG8-5624-000 | 11 - | 13 | IC, PHOTO INTERRUPTER |
| WT3-5156-000 | 1 - | 5 | CORD, POWER |
| WT3-5160-000 | 1 - | 5 | CORD, POWER |

| PART NUMBER | FIGURE & KEY No. | | DESCRIPTION |
|------------------------------|------------------|---|-----------------------------------|
| WT3-5182-000 | 1 - | 5 | CORD, POWER |
| XA9-1258-000 | S - | 2 | SCREW, TAP, WASHER HEAD, M3X12 |
| XA9-1437-000 | S - | 5 | SCREW, BIND, M2.6X4(REDF) |
| XB1-2200-505 | S - | 4 | SCREW, MACH, TRUSS HEAD, M2X5 |
| XB1-2300-405 | S - | 1 | SCREW, MACH.BH, M3X4 |
| XB6-7300-605 | S - | 3 | SCREW, MACHINE, WASHER HEAD, M3x6 |

www.drukparts.pl